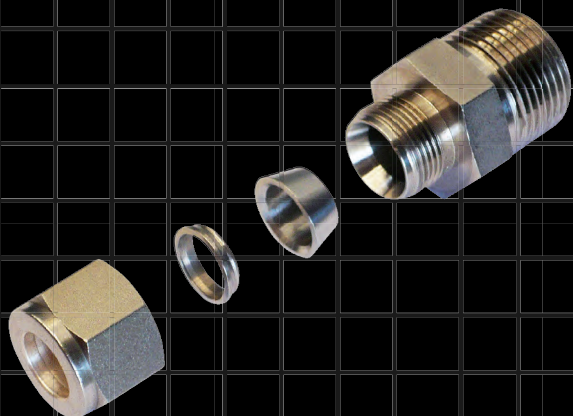
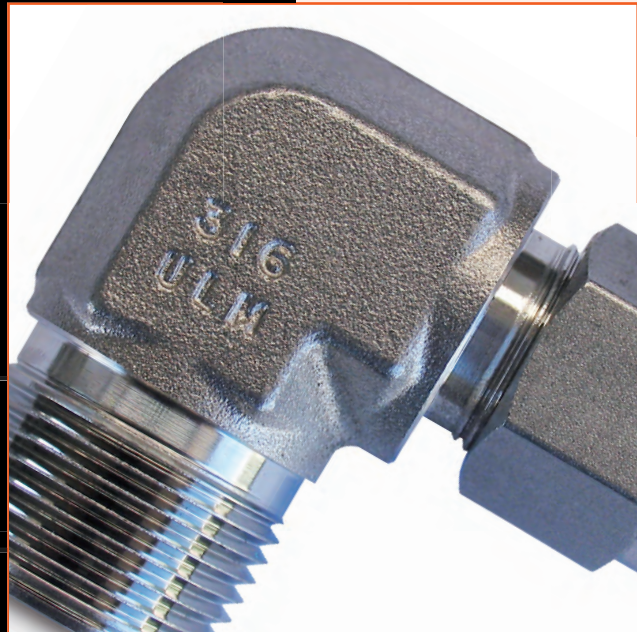
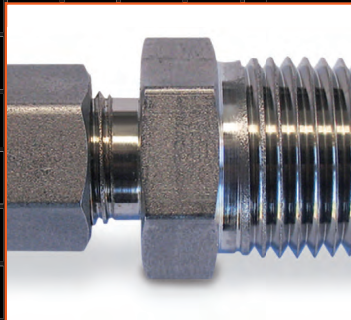
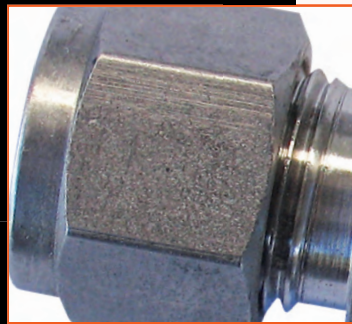
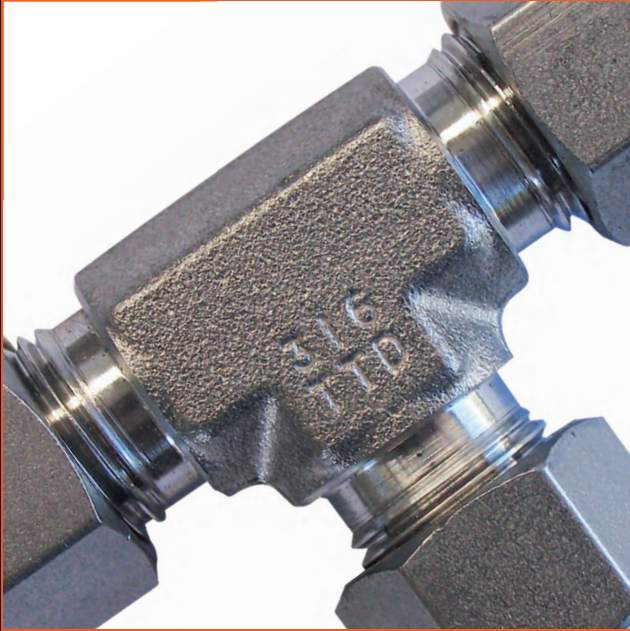
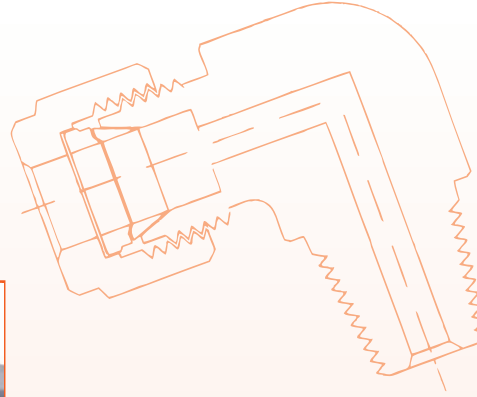


TUBE COMPRESSION FITTINGS

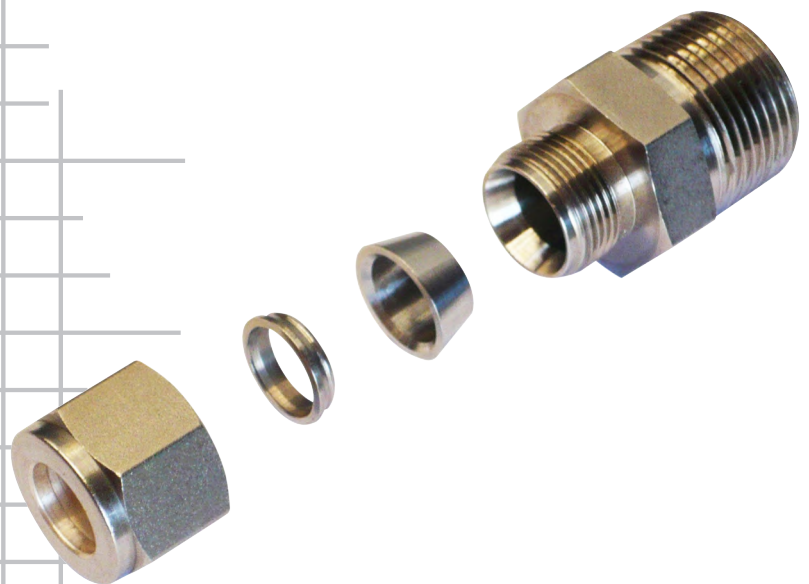
TWIN-LOK[®]



**AUSTRALIAN
PIPELINE VALVE[®]**

www.australianpipelinevalve.com.au

QUALITY MANUFACTURER



Contents

Twin Ferrule Tube Compression Fittings

Page 4

TUBE TO MALE PIPE

- Male Connector
- Bulkhead Male Connector
- Male Elbow
- Male Run Tee
- Male Branch Tee

Page 5-6

Page 6

Page 7

Page 8

Page 8

TUBE TO FEMALE PIPE

- Female Connector
- Bulkhead Female Connector
- Female Elbow
- Female Run TEE
- Female Branch Tee

Page 9

Page 10

Page 10

Page 11

Page 11

TUBE TO TUBE UNION

- Union Tee
- Union
- Reducing Union
- Bulkhead Union
- Union Elbow

Page 12

Page 12

Page 13

Page 14

Page 14

PORT CONNECTOR

- Reducer
- Male Adaptor
- Female Adaptor

Page 15

Page 16

Page 16

COMPONENT

- Nut
- Back Ferrule
- Front Ferrule

Page 17

Page 17

Page 17

THREADED FITTINGS

- Hex Nipple
- Hex Long Nipple
- Hex Reducing Nipple
- Adaptor
- Reducing Adaptor
- Reducing Bushing
- Hex Coupling
- Hex Reducing Coupling
- Pipe Plug

Page 18

Page 18

Page 18

Page 19

Page 19

Page 19

Page 20

Page 20

Page 20

Twin Ferrule Tube Compression Fittings

Corrosion Resistant

Ferrules have a very strong corrosion resistance because of the special hardening process used in manufacturing.

Interchangeable

Tube Fittings are interchangeable with market leaders with full Ferrule and nut interchangeability.

Gaugeable

Tube Fittings are manufactured in accordance with exacting tolerances which ensure a quality Tube Fitting.

Certification

Twin-lok Tube Fittings are all batch tested and have been design tested for leakage. Full material certification can be supplied.

Features

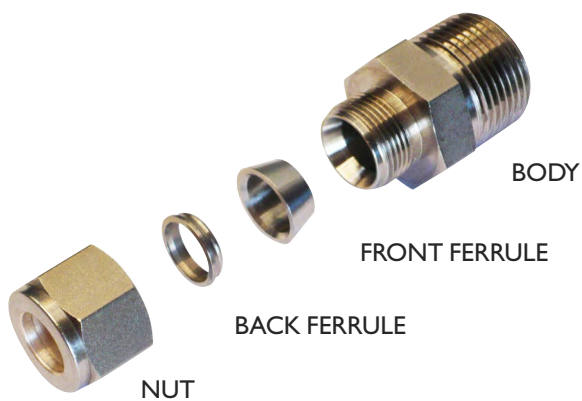
Twin-Lok compression Tube Fittings are manufactured to meet the specifications required for a wide range of applications in hydraulic, chemical, process control, petrochemical and instrumentation. The tube fittings are composed of four parts: body, front ferrule, back ferrule and nut. The twin-ferrule design compensates for any tolerances in tube O.D., wall thickness, material hardness and assures leak-proof connections.

Material

Tube fittings are available as standard in 316 Stainless Steel. Straight fittings are machined from bar stock and shaped bodies from forgings.

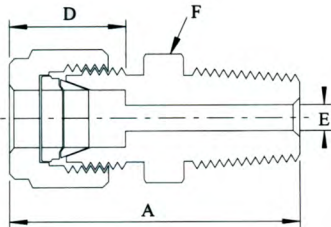
Dimensions

Tube fittings are supplied in metric and fractional sizes from 6mm to 25mm or 1/8" to 1" available with NPT, BSPT and BSPP threads.



**Twin ferrule tube fittings (also available in single ferrule style)
Fully interchangeable with both Market Leaders**

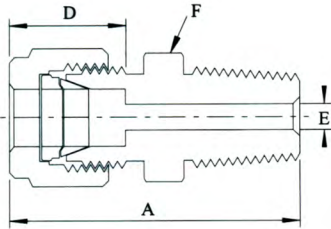
MALE CONNECTOR



TUBE O.D. IN	NPT THREAD IN	A	D	E	F
Inches					
1/8	1/8	1.20	0.50	0.09	7/16
1/8	1/4	1.40	0.50	0.09	9/16
1/8	3/8	1.41	0.50	0.09	11/16
1/8	1/2	1.66	0.50	0.09	7/8
1/4	1/8	1.29	0.60	0.19	1/2
1/4	1/4	1.49	0.60	0.19	9/16
1/4	3/8	1.51	0.60	0.19	11/16
1/4	1/2	1.76	0.60	0.19	7/8
1/4	3/4	1.82	0.60	0.19	1 ¹ / ₁₆
5/16	1/8	1.34	0.64	0.19	9/16
5/16	1/4	1.52	0.64	0.25	9/16
5/16	3/8	1.54	0.64	0.25	11/16
3/8	1/8	1.39	0.66	0.19	5/8
3/8	1/4	1.57	0.66	0.28	5/8
3/8	3/8	1.57	0.66	0.28	11/16
3/8	1/2	1.82	0.66	0.28	7/8
3/8	3/4	1.88	0.66	0.28	1 ¹ / ₁₆
1/2	1/8	1.53	0.90	0.19	13/16
1/2	1/4	1.71	0.90	0.28	13/16
1/2	3/8	1.71	0.90	0.38	13/16
1/2	1/2	1.93	0.90	0.41	7/8
1/2	3/4	1.99	0.90	0.41	1 ¹ / ₁₆
1/2	1	2.25	0.90	0.41	1 ³ / ₈
5/8	3/8	1.74	0.96	0.38	15/16
5/8	1/2	1.93	0.96	0.47	15/16
5/8	3/4	1.99	0.96	0.50	1 ¹ / ₁₆
3/4	1/2	1.99	0.96	0.47	1 ¹ / ₁₆
3/4	3/4	1.99	0.96	0.62	1 ¹ / ₁₆
3/4	1	2.25	0.96	0.62	1 ³ / ₈
7/8	3/4	1.99	1.02	0.62	1 ³ / ₁₆
7/8	1	2.25	1.02	0.72	1 ³ / ₈
1	1/2	2.26	1.23	0.47	1 ³ / ₈
1	3/4	2.26	1.23	0.62	1 ³ / ₈
1	1	2.45	1.23	0.88	1 ³ / ₈

Dimensions for reference only, subject to change.

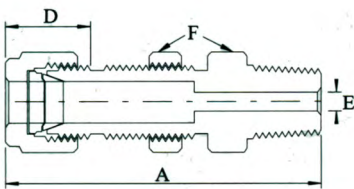
MALE CONNECTOR



TUBE O.D.	NPT THREAD	A	D	E	F
Millimetres					
6	1/8	32.80	15.30	4.80	14
6	1/4	37.90	15.30	4.80	14
6	3/8	38.40	15.30	4.80	18
6	1/2	44.70	15.30	4.80	22
8	1/8	34.20	16.20	4.80	15
8	1/4	38.70	16.20	6.40	15
8	3/8	39.30	16.20	6.40	18
10	1/8	36.30	17.20	4.80	18
10	1/4	40.90	17.20	7.90	18
10	3/8	40.90	17.20	7.90	18
10	1/2	46.50	17.20	7.90	22
12	1/4	43.40	22.80	7.10	22
12	3/8	43.40	22.80	9.50	22
12	1/2	49.00	22.80	9.50	22
12	3/4	50.50	22.80	9.50	27
16	3/8	44.10	24.40	9.50	24
16	1/2	49.00	24.40	11.90	24
16	3/4	50.50	24.40	12.70	27
18	1/2	50.50	24.40	11.90	27
18	3/4	50.50	24.40	15.10	27
20	1/2	52.30	26.00	11.90	30
20	3/4	52.30	26.00	15.90	30
22	3/4	52.30	26.00	15.90	30
22	1	57.10	26.00	18.30	35
25	3/4	57.50	31.30	15.90	35
25	1	62.30	31.30	21.80	35

Dimensions for reference only, subject to change.

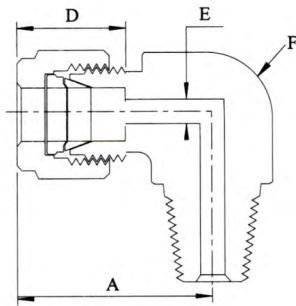
BULKHEAD MALE CONNECTOR



TUBE O.D.	NPT THREAD	A	D	E	F	Panel Hole Size	Max. Panel Thickness
Inches							
1/8	1/8	1.83	0.50	0.09	12	21/64	0.50
1/4	1/8	1.95	0.60	0.19	5/8	29/64	0.40
1/4	1/4	2.13	0.60	0.19	5/8	29/64	0.40
3/8	1/4	2.26	0.66	0.28	3/4	37/64	0.44
3/8	3/8	2.26	0.66	0.28	3/4	37/64	0.44
3/8	1/2	2.51	0.66	0.28	7/8	37/64	0.44
1/2	3/8	2.49	0.90	0.38	15/16	49/64	0.50
1/2	1/2	2.71	0.90	0.41	15/16	49/64	0.50
Millimetres							
6	1/4	53.60	15.30	4.80	16	11.5	10.20
12	1/2	68.80	9.50	9.50	24	19.5	12.70

Dimensions for reference only, subject to change.

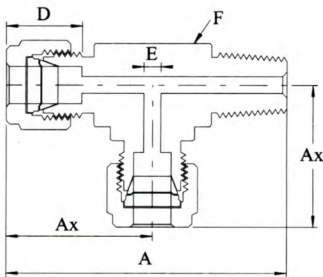
MALE ELBOW



TUBE O.D.	NPT THREAD	A	D	E	F
Inches					
1/8	1/16	0.93	0.50	0.09	7/16
1/8	1/8	0.93	0.50	0.09	7/16
1/8	1/4	0.97	0.50	0.09	1/2
1/4	1/8	1.06	0.60	0.19	1/2
1/4	1/4	1.06	0.60	0.19	1/2
1/4	3/8	1.17	0.60	0.19	11/16
1/4	1/2	1.25	0.60	0.19	13/16
5/16	1/8	1.13	0.64	0.19	9/16
5/16	1/4	1.13	0.64	0.25	9/16
5/16	3/8	1.20	0.64	0.25	11/16
3/8	1/8	1.20	0.66	0.19	5/8
3/8	1/4	1.20	0.66	0.28	5/8
3/8	3/8	1.20	0.66	0.28	11/16
3/8	1/2	1.31	0.66	0.28	13/16
3/8	3/4	1.46	0.66	0.28	1 1/16
1/2	1/4	1.42	0.90	0.28	13/16
1/2	3/8	1.42	0.90	0.38	13/16
1/2	1/2	1.42	0.90	0.41	13/16
1/2	3/4	1.57	0.90	0.41	1 1/16
5/8	3/8	1.50	0.96	0.38	15/16
5/8	1/2	1.50	0.96	0.47	15/16
5/8	3/4	1.57	0.96	0.50	1 1/16
3/4	1/2	1.57	0.96	0.47	1 1/16
3/4	3/4	1.57	0.96	0.62	1 1/16
7/8	3/4	1.76	1.02	0.62	1 3/8
1	3/4	1.93	1.23	0.62	1 3/8
1	1	1.93	1.23	0.88	1 3/8
Millimetres					Inches
6	1/8	27.00	15.30	4.80	1/2
6	1/4	27.00	15.30	4.80	1/2
6	3/8	29.80	15.30	4.80	11/16
6	1/2	31.80	15.30	4.80	13/16
8	1/4	28.80	16.20	6.40	9/16
8	1/2	32.60	16.20	6.40	13/16
10	1/4	31.50	17.20	7.10	11/16
10	3/8	31.50	17.20	7.90	11/16
10	1/2	33.50	17.20	7.90	13/16
12	1/4	36.00	22.80	7.10	13/16
12	3/8	36.00	22.80	9.50	13/16
12	1/2	36.00	22.80	9.50	13/16
12	3/4	39.80	22.80	9.50	1 1/16
16	3/8	38.00	24.40	9.50	15/16
16	1/2	38.00	24.40	11.90	15/16
18	1/2	39.80	24.40	11.90	1 1/16
18	3/4	39.80	24.40	15.10	1 1/16
20	1/2	44.60	26.00	11.90	1 3/8
20	3/4	44.60	26.00	15.90	1 3/8
22	3/4	44.60	26.00	15.90	1 3/8
22	1	44.60	26.00	18.30	1 3/8
25	3/4	49.10	31.30	15.90	1 3/8
25	1	49.10	31.30	21.80	1 3/8

Dimensions for reference only, subject to change.

MALE RUN TEE

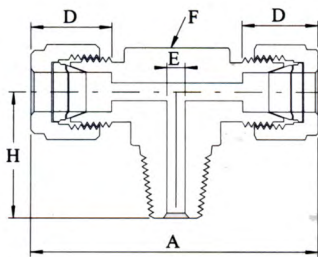


TUBE O.D.	NPT THREAD	A	Ax	D	E	F
Inches						
1/8	1/8	1.63	0.93	0.50	0.09	7/16
1/4	1/8	1.80	1.06	0.60	0.19	1/2
1/4	1/4	1.98	1.06	0.60	0.19	1/2
3/8	1/4	2.20	1.0	0.66	0.28	5/8
1/2	3/8	2.53	1.42	0.90	0.38	13/16
1/2	1/2	2.72	1.42	0.90	0.41	13/16
3/4	3/4	3.02	1.57	0.96	0.62	1 1/16

Millimetres						Inches
6	1/8	45.80	27.00	15.30	4.80	1/2
6	1/4	50.30	27.00	15.30	4.80	1/2
8	1/4	55.30	29.90	16.20	6.40	5/8
12	1/4	64.20	36.00	22.80	7.10	13/16
12	1/2	69.00	36.00	22.80	9.50	13/16

Dimensions for reference only, subject to change.

MALE BRANCH TEE

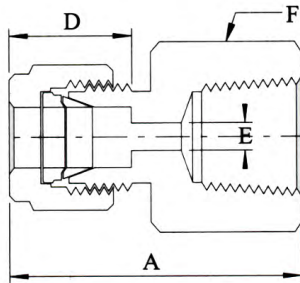


TUBE O.D.	NPT THREAD	A	D	E	F	H
Inches						
1/8	1/8	1.86	0.50	0.09	7/16	0.70
1/8	1/4	1.94	0.50	0.09	1/2	0.92
1/4	1/8	2.12	0.60	0.19	1/2	0.74
1/4	1/4	2.12	0.60	0.19	1/2	0.92
5/16	1/8	2.34	0.64	0.19	5/8	0.82
3/8	1/4	2.40	0.66	0.28	5/8	1.00
3/8	3/8	2.62	0.66	0.28	13/16	1.11
1/2	3/8	2.84	0.90	0.38	13/16	1.11
1/2	1/2	2.84	0.90	0.41	13/16	1.30
3/4	3/4	3.14	0.96	0.62	1 1/16	1.45

Millimetres						Inches
6	1/8	53.90	15.30	4.80	1/2	18.80
6	1/4	53.90	15.30	4.80	1/2	23.40
8	1/8	59.70	16.20	4.80	5/8	20.80
8	1/4	59.70	16.20	6.40	5/8	25.40
10	1/4	67.00	17.20	7.10	13/16	26.20
12	1/4	72.00	22.80	7.10	13/16	28.20
12	3/8	72.00	22.80	9.50	13/16	28.20
12	1/2	72.00	22.80	9.50	13/16	33.00

Dimensions for reference only, subject to change.

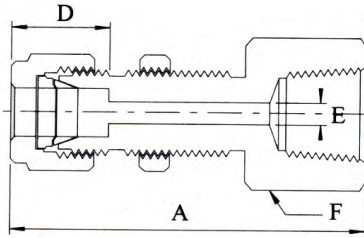
FEMALE CONNECTOR



TUBE O.D.	NPT THREAD	A	D	E	F
Inches					
1/8	1/8	1.13	0.50	0.09	9/16
1/8	1/4	1.32	0.50	0.09	3/4
1/4	1/8	1.23	0.60	0.19	9/16
1/4	1/4	1.41	0.60	0.19	3/4
1/4	3/8	1.48	0.60	0.19	7/8
1/4	1/2	1.67	0.60	0.19	1 1/16
5/16	1/8	1.26	0.64	0.25	9/16
5/16	1/4	1.45	0.64	0.25	3/4
3/8	1/8	1.29	0.66	0.28	5/8
3/8	1/4	1.48	0.66	0.28	3/4
3/8	3/8	1.54	0.66	0.28	7/8
3/8	1/2	1.73	0.66	0.28	1 1/16
3/8	3/4	1.88	0.66	0.28	1 5/16
1/2	1/4	1.59	0.90	0.41	1 3/16
1/2	3/8	1.65	0.90	0.41	7/8
1/2	1/2	1.84	0.90	0.41	1 1/16
1/2	3/4	1.90	0.90	0.41	1 5/16
5/8	3/8	1.65	0.96	0.50	1 5/16
5/8	1/2	1.84	0.96	0.50	1 1/16
3/4	1/2	1.84	0.96	0.62	1 1/16
3/4	3/4	1.90	0.96	0.62	1 5/16
7/8	3/4	1.96	1.02	0.72	1 5/16
1	3/4	2.10	1.23	0.88	1 3/8
1	1	2.45	1.23	0.88	1 5/8
Millimetres					
6	1/8	31.30	15.30	4.80	14
6	1/4	35.80	15.30	4.80	19
6	3/8	37.60	15.30	4.80	22
6	1/2	42.50	15.30	4.80	27
8	1/4	37.00	16.20	6.40	19
8	3/8	38.50	16.20	6.40	22
8	1/2	43.30	16.20	6.40	27
10	1/4	37.80	17.20	7.90	19
10	3/8	39.40	17.20	7.90	22
10	1/2	44.20	17.20	7.90	27
12	1/4	40.30	22.80	9.50	22
12	3/8	41.90	22.80	9.50	22
12	1/2	46.70	22.80	9.50	27
20	1/2	47.90	26.00	15.90	30
20	3/4	49.70	26.00	15.90	35
22	3/4	49.70	26.00	18.30	35
22	1	57.90	26.00	18.30	41
25	3/4	53.40	31.30	21.80	35
25	1	62.30	31.30	21.80	41

Dimensions for reference only, subject to change.

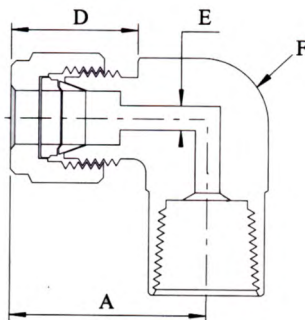
BULKHEAD FEMALE CONNECTOR



TUBE O.D.	NPT THREAD	A	D	E	F	Panel Hole Size	Max. Panel Thickness
Inches							
1/8	1/8	1.76	0.50	0.09	9/16	21/64	0.50
1/4	1/8	1.85	0.60	0.19	5/8	29/64	0.40
1/4	1/4	2.04	0.60	0.19	3/4	29/64	0.40
3/8	1/4	2.17	0.66	0.28	3/4	37/64	0.44
1/2	3/8	2.43	0.90	0.41	15/16	49/64	0.50
1/2	1/2	2.62	0.90	0.41	1 1/16	49/64	0.50

Millimetres							
6	1/4	51.80	15.30	4.80	19	11.50	10.20
12	1/2	66.50	22.80	9.50	27	19.50	12.70

FEMALE ELBOW

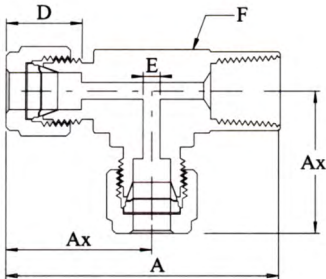


TUBE O.D.	NPT THREAD	A	D	E	F
Inches					
1/8	1/8	0.97	0.50	0.09	1/2
1/8	1/4	1.08	0.50	0.09	11/16
1/4	1/8	1.06	0.60	0.19	1/2
1/4	1/4	1.17	0.60	0.19	11/16
1/4	3/8	1.25	0.60	0.19	13/16
1/4	1/2	1.36	0.60	0.19	1
5/16	1/8	1.13	0.64	0.25	9/16
5/16	1/4	1.20	0.64	0.25	11/16
3/8	1/8	1.20	0.66	0.28	5/8
3/8	1/4	1.23	0.66	0.28	11/16
3/8	3/8	1.31	0.66	0.28	13/16
3/8	1/2	1.42	0.66	0.28	1
1/2	1/4	1.42	0.90	0.41	13/16
1/2	3/8	1.42	0.90	0.41	13/16
1/2	1/2	1.53	0.90	0.41	1
5/8	3/8	1.50	0.96	0.50	15/16
5/8	1/2	1.57	0.96	0.50	1 1/16
3/4	1/2	1.57	0.96	0.62	1 1/16
3/4	3/4	1.76	0.96	0.62	1 3/8
7/8	3/4	1.76	1.02	0.72	1 3/8
1	3/4	1.93	1.23	0.88	1 3/8
1	1	2.11	1.23	0.88	1 11/16

Millimetres					Inches
6	1/8	27.00	15.30	4.80	1/2
6	1/4	29.80	15.30	4.80	1/16
6	1/2	34.60	15.30	4.80	1
8	1/4	30.60	16.20	6.40	11/16
10	1/4	33.50	17.20	7.90	13/16
12	1/4	36.00	22.80	9.50	13/16
12	1/2	38.80	22.80	9.50	1
16	1/2	39.50	24.40	12.70	1 1/16

Dimensions for reference only, subject to change.

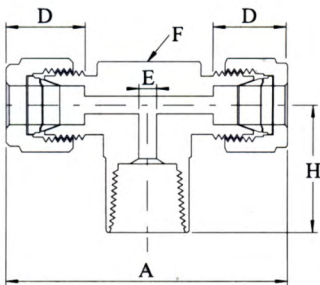
FEMALE RUN TEE



TUBE O.D.	NPT THREAD	A	Ax	D	E	F
Inches						
1/8	1/8	1.72	0.97	0.50	0.09	1/2
1/4	1/8	1.81	1.06	0.60	0.19	1/2
1/4	1/4	2.05	1.17	0.60	0.19	11/16
3/8	1/4	2.11	1.23	0.66	0.28	11/16
1/2	3/8	2.30	1.42	0.90	0.41	13/16
1/2	1/2	2.69	1.57	0.90	0.41	1 1/16
3/4	3/4	3.01	1.76	0.96	0.62	1 3/8
Millimetres						Inches
6	1/8	46.00	27.00	15.30	4.80	1/2
6	1/4	52.10	29.80	15.30	4.80	11/16
8	1/8	48.90	29.90	16.20	6.40	5/8
8	1/4	53.00	30.60	16.20	6.40	11/16
10	1/4	55.90	33.50	17.20	7.90	13/16
12	1/4	58.40	36.00	22.80	9.50	13/16
12	3/8	58.40	36.00	22.80	10.30	13/16

Dimensions for reference only, subject to change.

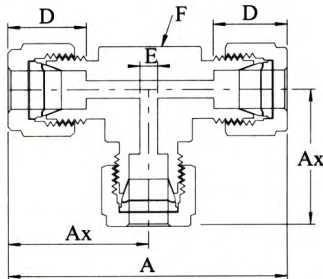
FEMALE BRANCH TEE



TUBE O.D.	NPT THREAD	A	D	E	F	H
Inches						
1/8	1/8	1.94	0.50	0.09	1/2	0.75
1/4	1/8	2.12	0.60	0.19	1/2	0.75
1/4	1/4	2.34	0.60	0.19	11/16	0.88
3/8	1/4	2.46	0.66	0.28	11/16	0.88
1/2	1/4	2.84	0.90	0.41	13/16	0.88
1/2	3/8	2.84	0.90	0.41	13/16	0.88
1/2	1/2	3.06	0.90	0.41	1	1.12
1	3/4	3.86	1.23	0.88	1 3/8	1.25
1	1	4.22	1.23	0.88	1 11/16	1.50
Millimetres				Inches		
6	1/8	53.90	15.30	4.80	1/2	19.00
6	1/4	59.50	15.30	4.80	11/16	22.40
8	1/8	59.70	16.20	6.40	5/8	19.00
8	1/4	61.20	16.20	6.40	11/16	22.40
10	1/4	67.00	17.20	7.90	13/16	22.40
12	1/4	72.00	22.80	9.50	13/16	22.40
12	3/8	72.00	22.80	9.50	13/16	22.40

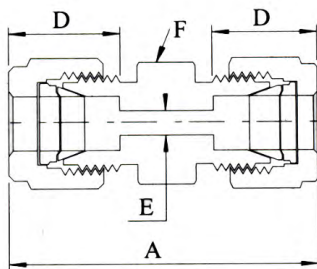
Dimensions for reference only, subject to change.

UNION TEE



TUBE O.D.	A	Ax	D	E	F
Inches					
1/8	1.76	0.88	0.50	0.09	3/8
1/4	2.12	1.06	0.60	0.19	1/2
5/16	2.34	1.17	0.64	0.25	5/8
3/8	2.40	1.20	0.66	0.28	5/8
1/2	2.84	1.42	0.90	0.41	13/16
5/8	3.03	1.53	0.96	0.50	1
3/4	3.14	1.57	0.96	0.62	1 1/16
7/8	3.52	1.76	1.02	0.72	1 3/8
1	3.86	1.93	1.23	0.88	1 3/8
Millimetres					
6	53.90	27.00	15.30	4.80	1/2
8	59.70	29.90	16.20	6.40	5/8
10	63.00	31.50	17.20	7.90	11/16
12	72.00	36.00	22.80	9.50	13/16
15	77.60	38.80	24.40	11.90	1
16	77.60	38.80	24.40	12.70	1
18	79.60	39.80	24.40	15.10	1 1/16
20	89.30	44.60	26.00	15.90	1 3/8
22	89.30	44.60	26.00	18.30	1 3/8
25	98.30	49.10	31.30	21.80	1 3/8

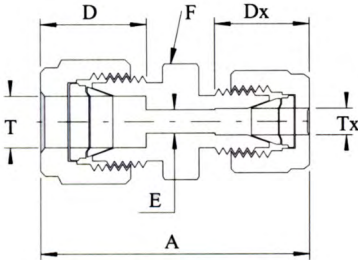
UNION



TUBE O.D.	A	D	E	F
Inches				
1/8	1.40	0.50	0.09	7/16
1/4	1.61	0.60	0.19	1/2
5/16	1.69	0.64	0.25	9/16
3/8	1.77	0.66	0.28	5/8
1/2	2.02	0.90	0.41	13/16
5/8	2.05	0.96	0.50	16/15
3/4	2.11	0.96	0.62	1 1/16
7/8	2.17	1.02	0.72	1 3/16
1	2.55	1.23	0.88	1 3/8
Millimetres				
6	41.00	15.30	4.80	14
8	43.20	16.20	6.40	15
10	46.20	17.20	7.90	18
12	51.20	22.80	9.50	22
14	52.00	24.40	11.10	24
15	52.00	24.40	11.90	24
16	52.00	24.40	12.70	24
18	53.50	24.40	15.10	27
20	55.00	26.00	15.90	30
22	55.00	26.00	18.30	30
25	65.00	31.30	21.80	35

Dimensions for reference only, subject to change.

REDUCING UNION

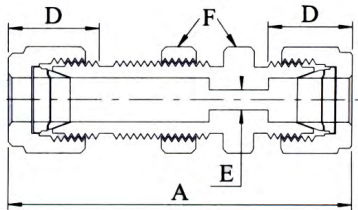


T TUBE O.D.	Tx TUBE O.D.	A	D	Dx	E	F
Inches						
1/4	1/8	1.52	0.60	0.50	0.09	1/2
5/16	1/8	1.56	0.64	0.50	0.09	9/16
5/16	1/4	1.66	0.64	0.60	0.19	9/16
3/8	1/16	1.44	0.66	0.34	0.05	5/8
3/8	1/8	1.61	0.66	0.50	0.09	5/8
3/8	1/4	1.70	0.66	0.60	0.19	5/8
3/8	5/16	1.74	0.66	0.64	0.25	5/8
1/2	1/8	1.78	0.90	0.50	0.09	13/16
1/2	1/4	1.85	0.90	0.60	0.19	13/16
1/2	3/8	1.91	0.90	0.66	0.28	13/16
5/8	3/8	1.94	0.96	0.66	0.28	15/16
5/8	1/2	2.05	0.96	0.90	0.41	15/16
3/4	1/4	1.94	0.96	0.60	0.19	1 1/16
3/4	3/8	2.00	0.96	0.66	0.28	1 1/16
3/4	1/2	2.11	0.96	0.90	0.41	1 1/16
3/4	5/8	2.11	0.96	0.96	0.50	1 1/16
1	1/2	2.38	1.23	0.90	0.41	1 3/8
1	3/4	2.38	1.23	0.96	0.62	1 3/8

Millimetres						
6	1/8	38.50	15.30	12.80	2.40	14
6	1/4	41.00	15.30	15.30	4.80	14
6	5/16	42.30	15.30	16.20	4.80	14
8	1/4	42.30	16.20	15.30	4.80	15
10	1/8	41.80	17.20	12.80	2.40	18
10	1/4	44.50	17.20	15.30	4.80	18
10	5/16	45.10	17.20	16.20	6.40	18
10	3/8	45.90	17.20	16.90	7.10	18
12	5/16	47.80	22.80	16.20	6.40	22
12	3/8	48.40	22.80	16.90	7.10	22
12	1/2	51.20	22.80	22.80	9.50	22
15	1/2	52.00	24.40	22.80	10.30	24
16	5/8	52.00	24.40	24.40	12.70	24
18	3/4	53.50	24.40	24.40	15.10	27

Dimensions for reference only, subject to change.

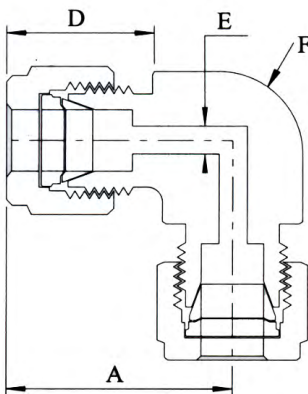
BULKHEAD UNION



TUBE O.D.	A	D	E	F	Panel Hole Drill Size	Max. Panel Thickness
Inches						
1/8	2.02	0.50	0.09	1/2	21/64	0.50
1/4	2.27	0.60	0.19	5/8	29/64	0.40
5/16	2.39	0.64	0.25	11/16	33/64	0.44
3/8	2.45	0.66	0.28	3/4	37/64	0.44
1/2	2.80	0.90	0.41	15/16	49/64	0.50
5/8	2.86	0.96	0.50	1 ¹ / ₁₆	57/64	0.50
3/4	3.11	0.96	0.62	1 ³ / ₁₆	11/64	0.66
1	3.77	1.23	0.88	1 ⁵ / ₈	1 ²¹ / ₆₄	0.75

Millimetres						
6	57.70	15.30	4.80	16	11.50	10.20
8	61.00	16.20	6.40	18	13.10	11.20
10	63.70	17.20	7.90	22	16.30	11.20
12	71.00	22.80	9.50	24	19.50	12.70
14	72.50	24.40	11.10	27	22.50	12.70
15	72.50	24.40	11.90	27	22.80	12.70
16	72.50	24.40	12.70	27	22.80	12.70
18	78.90	24.40	15.10	30	26.00	16.80
20	84.50	26.00	15.90	35	29.00	19.00

UNION ELBOW

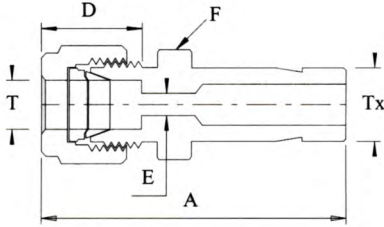


TUBE O.D.	A	D	E	F
Inches				
1/8	0.88	0.50	0.09	3/8
1/4	1.06	0.60	0.19	1/2
5/16	1.13	0.64	0.25	9/16
3/8	1.20	0.66	0.25	5/8
1/2	1.42	0.90	0.41	13/16
5/8	1.50	0.96	0.50	15/16
3/4	1.57	0.96	0.62	1 ¹ / ₁₆
7/8	1.76	1.02	0.72	1 ³ / ₈
1	1.93	1.23	0.88	1 ³ / ₈

Millimetres			Inches	
6	27.00	15.30	4.80	1/2
8	28.80	16.20	6.40	9/16
10	31.50	17.20	7.90	11/16
12	36.00	22.80	9.50	13/16
15	38.00	24.40	11.90	15/16
16	8.00	24.40	12.70	15/16
18	39.80	24.40	15.10	1 ¹ / ₁₆
20	44.60	26.00	15.90	1 ³ / ₈
22	44.60	26.00	18.30	1 ³ / ₈
25	49.10	31.30	21.80	1 ³ / ₈

Dimensions for reference only, subject to change.

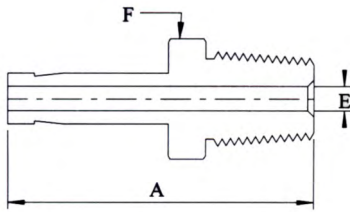
REDUCER



T TUBE O.D.	Tx TUBE O.D.	A	D	E	F
Inches					
1/8	1/8	1.32	0.50	0.08	7/16
1/8	3/16	1.35	0.50	0.09	7/16
1/8	1/4	1.42	0.50	0.09	7/16
1/8	3/8	1.48	0.50	0.09	7/16
1/8	1/2	1.74	0.50	0.09	9/16
3/16	1/8	1.37	0.54	0.08	7/16
3/16	1/4	1.46	0.54	0.12	7/16
1/4	1/8	1.45	0.60	0.08	1/2
1/4	3/16	1.48	0.60	0.12	1/2
1/4	1/4	1.54	0.60	0.17	1/2
1/4	5/16	1.57	0.60	0.19	1/2
1/4	3/8	1.60	0.60	0.19	1/2
1/4	1/2	1.82	0.60	0.19	9/16
1/4	3/4	1.88	0.60	0.19	13/16
5/16	1/4	1.87	0.64	0.25	9/16
5/16	3/8	1.65	0.64	0.25	9/16
3/8	1/4	1.63	0.66	0.17	5/8
3/8	3/8	1.70	0.66	0.27	5/8
3/8	1/2	1.91	0.66	0.28	5/8
3/8	3/4	1.98	0.66	0.28	13/16
1/2	1/4	1.77	0.90	0.17	13/16
1/2	3/8	1.84	0.90	0.27	13/16
1/2	1/2	2.06	0.90	0.37	13/16
1/2	3/4	2.12	0.90	0.41	13/16
1/2	1	2.37	0.90	0.41	1 1/16
5/8	3/4	2.15	0.96	0.50	15/16
5/8	7/8	2.21	0.96	0.50	15/16
5/8	1	2.40	0.96	0.50	1 1/16
3/4	1/2	2.15	0.96	0.37	1 1/16
3/4	1	2.46	0.96	0.62	1 1/16
Millimetres					
6	8	39.90	15.30	4.80	14
6	10	40.70	15.30	4.80	14
6	12	46.30	15.30	4.80	14
6	18	49.60	15.30	4.80	22
8	6	40.30	16.20	4.10	15
8	10	42.00	16.20	6.40	15
8	12	47.60	16.20	6.40	15
10	8	43.40	17.20	5.60	18
10	12	49.80	17.20	7.90	18
12	8	45.90	22.80	5.60	22
12	10	46.70	22.80	7.10	22
12	16	53.80	22.80	9.50	22
12	18	53.80	22.80	9.50	22
12	20	56.10	22.80	9.50	22
18	12	54.60	24.40	8.80	27
18	16	56.10	24.40	12.00	27

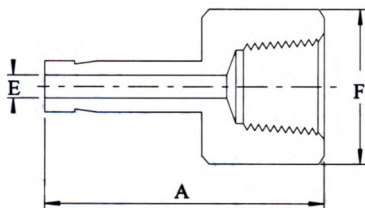
Dimensions for reference only, subject to change.

MALE ADAPTOR



TUBE O.D.	NPT THREAD	A	E	F
Inches				
1/8	1/8	1.16	0.08	7/16
1/8	1/4	1.37	0.08	9/16
1/4	1/8	1.25	0.17	7/16
1/4	1/4	1.46	0.17	9/16
1/4	3/8	1.49	0.17	11/16
1/4	1/2	1.71	0.17	7/8
3/8	1/8	1.32	0.19	7/16
3/8	1/4	1.53	0.27	9/16
3/8	3/8	1.56	0.27	11/16
3/8	1/2	1.78	0.27	7/8
1/2	1/4	1.75	0.28	9/16
1/2	3/8	1.78	0.37	11/16
1/2	1/2	2.00	0.37	7/8
Millimetres				
6	1/8	32.80	4.10	12
6	1/4	38.10	4.10	14
8	1/4	39.10	5.60	14
10	1/4	39.90	7.10	14
10	3/8	40.60	7.10	18
10	1/2	46.20	7.10	22
12	1/4	46.50	7.10	16
12	1/2	52.10	8.80	22

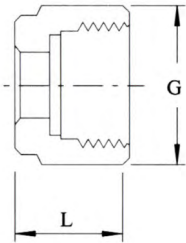
FEMALE ADAPTOR



TUBE O.D.	NPT THREAD	A	E	F
Inches				
1/8	1/8	1.24	0.08	9/16
1/8	1/4	1.39	0.08	3/4
1/4	1/8	1.30	0.17	9/16
1/4	1/4	1.46	0.17	3/4
1/4	3/8	1.55	0.17	7/8
1/4	1/2	1.79	0.17	1 1/16
3/8	1/8	1.35	0.27	9/16
3/8	1/4	1.50	0.27	3/4
3/8	3/8	1.59	0.27	7/8
3/8	1/2	1.84	0.27	1 1/16
1/2	1/4	1.71	0.37	3/4
1/2	3/8	1.79	0.37	7/8
1/2	1/2	2.05	0.37	1 1/16
Millimetres				
6	1/8	32.50	4.10	14
6	1/4	37.10	4.10	19
8	1/4	37.60	5.60	19
10	1/4	38.10	7.10	19
10	3/8	40.10	7.10	22
10	1/2	46.70	7.10	27
12	1/4	43.70	8.80	19
12	1/2	52.30	8.80	27

Dimensions for reference only, subject to change.

NUT



TUBE O.D.	G	L
Inches		
1/8	7/16	0.47
1/4	9/16	0.50
5/16	5/8	0.53
3/8	11/16	0.56
1/2	7/8	0.69
5/8	1	0.69
3/4	1 1/8	0.69
7/8	1 1/4	0.69
1	1 1/4	0.81

TUBE O.D.	G	L
Millimetres		
6	14	12.70
8	16	13.50
10	19	15.10
12	22	17.40
14	25	17.40
15	25	17.40
16	25	17.40
18	30	17.40
20	32	17.40
22	32	17.40
25	38	20.60

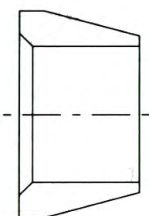
BACK FERRULE



TUBE O.D.
Inches
1/8
1/4
5/16
3/8
1/2
5/8
3/4
7/8
1

TUBE O.D.
Millimetres
6
8
10
12
14
15
16
18
20
22
25

FRONT FERRULE



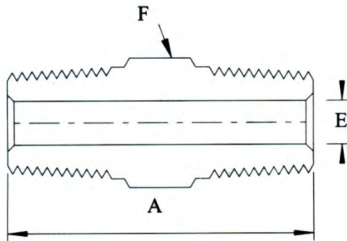
TUBE O.D.
Inches
1/8
1/4
5/16
3/8
1/2
5/8
3/4
7/8
1

TUBE O.D.
Millimetres
6
8
10
12
14
15
16
18
20
22
25

Dimensions for reference only, subject to change.

HEX NIPPLE

Male NPT Threads

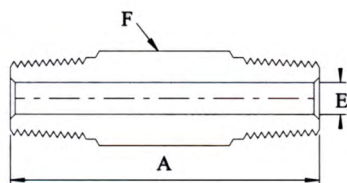


PART SIZE	A	E	F
Inches			
1/8	1.01	0.19	7/16
1/4	1.40	0.28	9/16
3/8	1.43	0.38	11/16
1/2	1.84	0.47	7/8
3/4	1.84	0.62	1 1/16
1	2.32	0.88	1 3/8

Dimensions for reference only, subject to change.

HEX LONG NIPPLE

Male NPT Threads

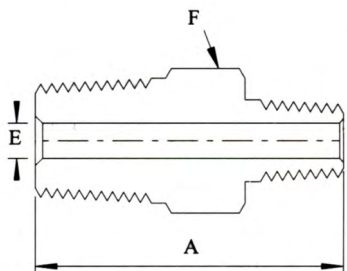


PIPE SIZE	A					E	F
	Available Lengths, inch						
	1.50	2.00	2.50	3.00	4.00		
Inches							
1/8	v	v	v	v	-	0.19	7/16
1/4	v	v	v	v	v	0.28	9/16
3/8	v	v	v	v	v	0.38	11/16
1/2	-	v	-	v	v	0.47	7/8
3/4	-	v	-	v	v	0.62	1 1/16
1	-	-	-	v	v	0.88	1 3/8

Dimensions for reference only, subject to change.

HEX REDUCING NIPPLE

Male NPT Threads

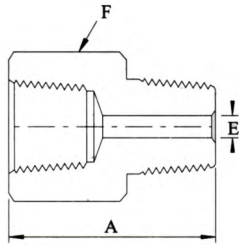


PIPE SIZE	PIPE SIZE	A	E	F
Inches				
1/4	1/8	1.22	0.19	9/16
3/8	1/8	1.25	0.19	11/16
3/8	1/4	1.43	0.28	11/16
1/2	1/8	1.47	0.19	7/8
1/2	1/4	1.65	0.28	7/8
1/2	3/8	1.65	0.38	7/8
3/4	1/4	1.65	0.28	1 1/16
3/4	1/2	1.84	0.47	1 1/16
1	1/2	2.13	0.47	1 3/8
1	3/4	2.13	0.62	1 3/8

Dimensions for reference only, subject to change.

ADAPTOR

Female to Male NPT Threads

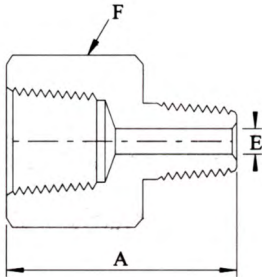


PART SIZE	A	E	F
Inches			
1/8	1.10	0.19	9/16
1/4	1.40	0.28	3/4
3/8	1.51	0.38	7/8
1/2	1.94	0.47	1 ¹ / ₁₆
3/4	2.02	0.62	1 ⁵ / ₁₆
1	2.28	0.88	1 ⁵ / ₈

Dimensions for reference only, subject to change.

REDUCING ADAPTOR

Female to Male NPT Threads

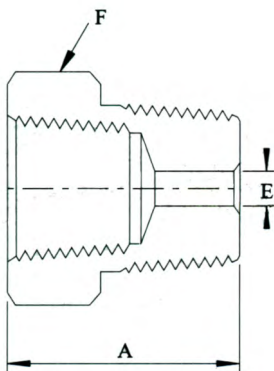


PIPE SIZE	PIPE SIZE	A	E	F
Inches				
1/4	1/8	1.26	0.19	3/4
3/8	1/8	1.33	0.19	7/8
3/8	1/4	1.50	0.28	7/8
1/2	1/8	1.58	0.19	1 ¹ / ₁₆
1/2	1/4	1.76	0.28	1 ¹ / ₁₆
1/2	3/8	1.75	0.38	1 ¹ / ₁₆
3/4	1/4	1.85	0.28	1 ⁵ / ₁₆
3/4	3/8	1.82	0.38	1 ⁵ / ₁₆
3/4	1/2	2.02	0.47	1 ⁵ / ₁₆
1	1/4	1.96	0.28	1 ⁵ / ₈
1	1/2	2.16	0.47	1 ⁵ / ₈
1	3/4	2.17	0.62	1 ⁵ / ₈

Dimensions for reference only, subject to change.

REDUCING BUSHING

Male to Female NPT Threads

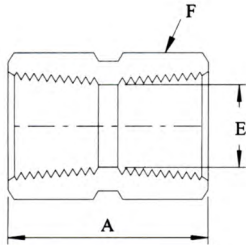


MALE PIPE SIZE	FEMALE PIPE SIZE	A	E	F
Inches				
1/4	1/8	1.06	0.28	9/16
3/8	1/8	0.86	0.34	11/16
3/8	1/4	1.19	0.38	3/4
1/2	1/8	1.08	0.34	7/8
1/2	1/4	1.08	0.45	7/8
1/2	3/8	1.41	0.47	7/8
3/4	1/4	1.08	0.45	1 ¹ / ₁₆
3/4	3/8	1.08	0.59	1 ¹ / ₁₆
3/4	1/2	1.63	0.62	1 ¹ / ₁₆
1	1/4	1.37	0.45	1 ³ / ₈
1	3/8	1.37	0.59	1 ³ / ₈
1	1/2	1.37	0.73	1 ³ / ₈
1	3/4	1.85	0.88	1 ³ / ₈

Dimensions for reference only, subject to change.

HEX COUPLING

Female NPT Threads

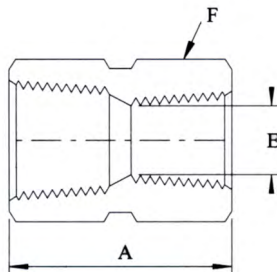


PART SIZE	A	E	F
Inches			
1/8	0.81	0.34	9/16
1/4	1.19	0.45	3/4
3/8	1.31	0.59	7/8
1/2	1.56	0.73	1 1/16
3/4	1.62	0.94	1 5/16
1	2.00	1.17	1 5/8

Dimensions for reference only, subject to change.

HEX REDUCING COUPLING

Female NPT Threads

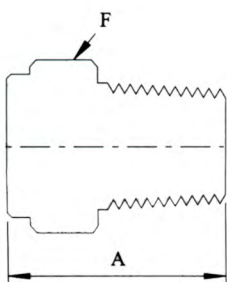


PIPE SIZE	PIPE SIZE	A	E	F
Inches				
1/4	1/8	1.22	0.34	3/4
3/8	1/4	1.38	0.45	7/8
1/2	1/8	1.56	0.34	1 1/16
1/2	1/4	1.75	0.45	1 1/16
1/2	3/8	1.78	0.59	1 1/16
3/4	1/4	1.81	0.45	1 5/16
3/4	1/2	2.06	0.73	1 5/16
1	1/2	2.19	0.73	1 5/8
1	3/4	2.25	0.94	1 5/8

Dimensions for reference only, subject to change.

PIPE PLUG

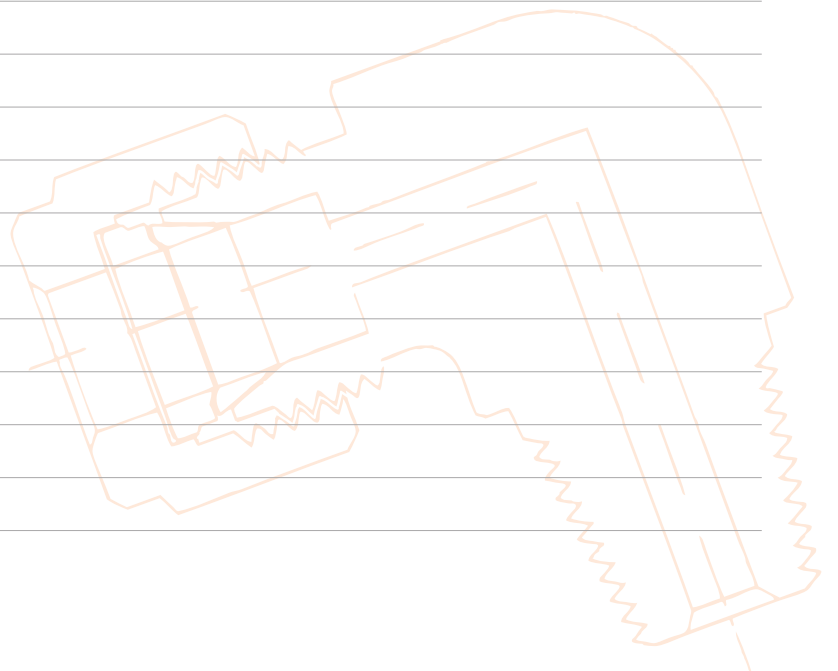
Male NPT Threads



PART SIZE	A	F
Inches		
1/8	0.75	7/16
1/4	0.96	9/16
3/8	0.99	1 1/16
1/2	1.21	7/8
3/4	1.21	1 1/16
1	1.50	1/8

Dimensions for reference only, subject to change.

Notes





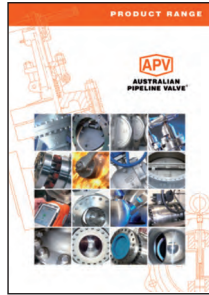
AUSTRALIAN PIPELINE VALVE®

COMPLETE PRODUCT LINE

“Australian Pipeline Valve produces isolation, control and flow reversal protection products for severe and critical service media in utility, steam, pipelines, oil and gas and process industries. APV valves and pipeline products form the most competitive portfolio in the market.”



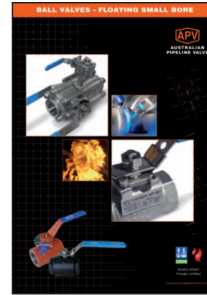
AUSTRALIAN PIPELINE VALVE BRAND RANGE - CATALOGUES



Product Brochure



Ball Valves Floating & Trunnion Mounted



Ball Valves Floating Small Bore



Ball Valves Special Service



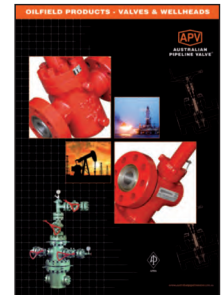
Gate, Globe & Check Valves - Cast



Gate, Globe & Check Valves - Forged Steel



Plug Valves Lubricated, Sleeved & Lined



Oilfield Products Valves & Wellheads

APV FAMILY OF BRANDS RANGE - CATALOGUES



Diamond Gear Gearboxes



Flowturn Ball Valves Multiway & Deadman



Flowturn Gate, Globe & Check Valves



Flowturn Instrument Valves



Flowturn Strainers & Sight Glasses



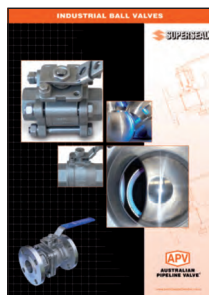
Steamco Steam Valves



Supercheck Wafer Check Valves



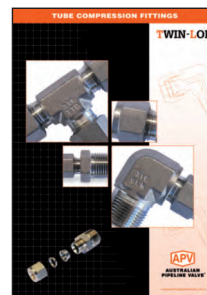
Superseal Butterfly Valves



Superseal Industrial Ball Valves



Torqturn Actuators



TwinLok Tube Fittings



Uniflo Check Valves

Download our catalogues at www.australianpipelinevalve.com.au



AUSTRALIAN PIPELINE VALVE®



www.australianpipelinevalve.com.au

LOCAL DISTRIBUTOR



QUALITY ASSURANCE AND CERTIFICATION

We are continually improving all facets of quality assurance. Full metallurgical and test certificates can be supplied.

We have endeavoured to provide a broad outline of our range and capabilities. Because we are continually developing new products for our customers the brochure will, to some extent be incomplete. This catalogue is a general overview only, individual drawings and data sheets can be furnished on request.

Therefore if you have any requirement in the field of valves and fittings, please contact us for a prompt response. Continuous development of Australian Pipeline Valve products may necessitate changes in the design or manufacturing processes. Australian Pipeline Valve reserves the right to effect any such changes without prior notice.

