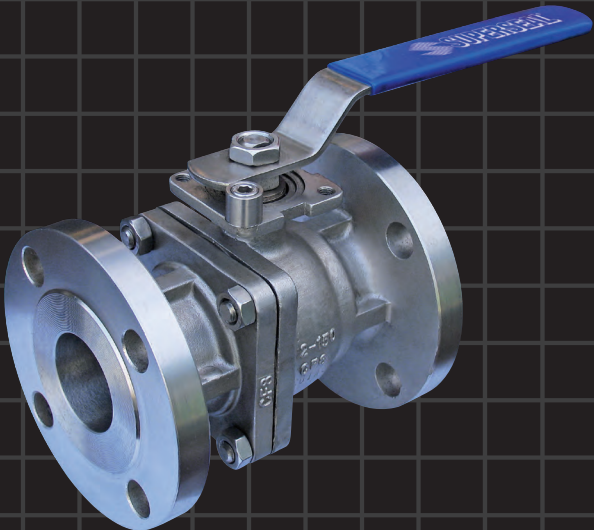
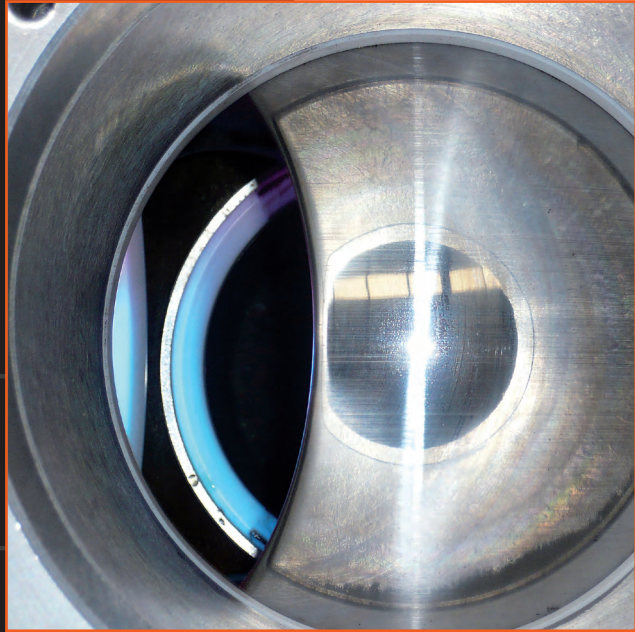
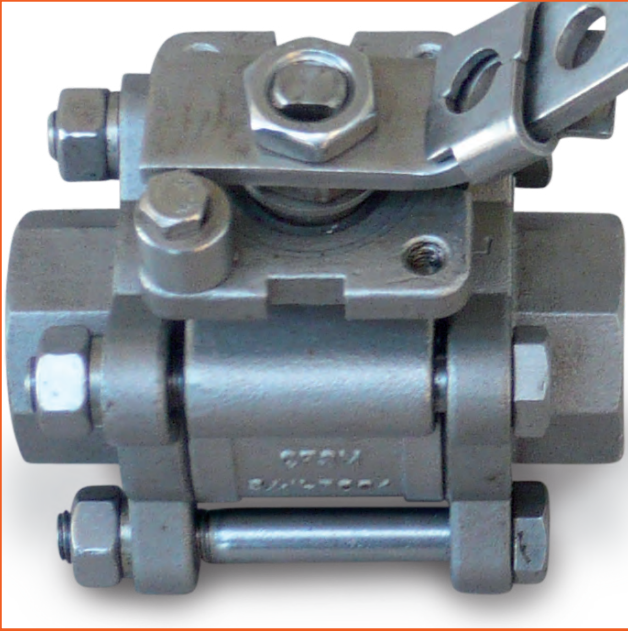
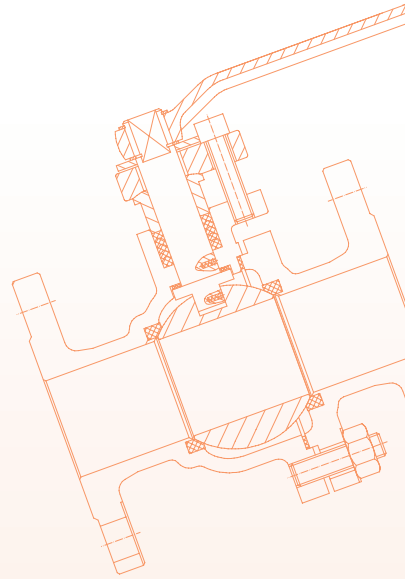


# INDUSTRIAL BALL VALVES

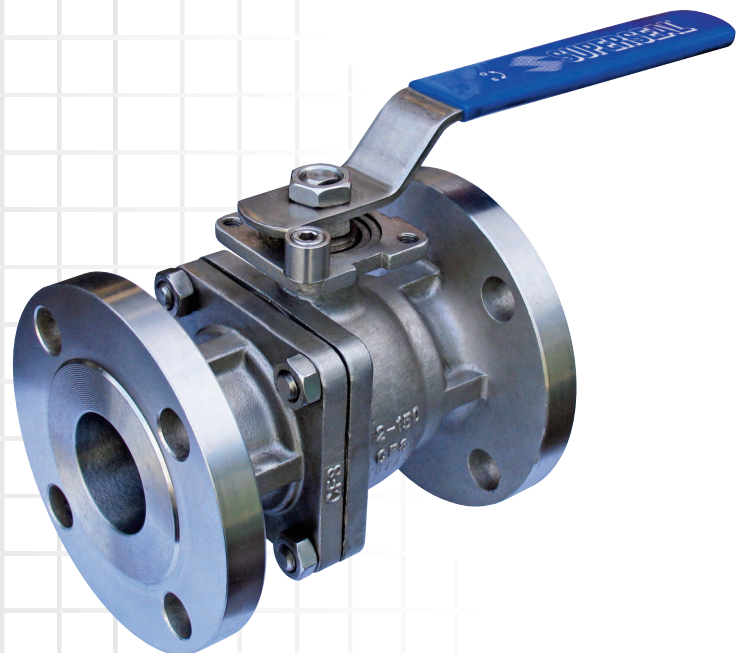


**AUSTRALIAN  
PIPELINE VALVE®**

[www.australianpipelinevalve.com.au](http://www.australianpipelinevalve.com.au)

## QUALITY COMMITMENT

*Quality is Our First Priority, and is achieved by embracing a philosophy of Total Quality Commitment.*





# Contents

---

Flanged 2 Piece Type Ball Valve SLBV02 Series	Page 4 - 5
2 Piece Body 1000 PSI Ball Valve 660 Series	Page 6
2 Piece Body 2000 PSI Ball Valve 660 Series	Page 7
3 Piece 1000 PSI Ball Valve VT-3 Series	Page 8 - 10
3 Piece 1500 PSI / 2000 PSI Ball Valve HVT-3 Series	Page 11 - 13
High Pressure Budget Valve 3000 PSI WOG	Page 14

Page 4 - 5
Page 6
Page 7
Page 8 - 10
Page 11 - 13
Page 14

AUSTRALIAN PIPELINE VALVE®

70-78 Stanbel Road Salisbury Plain South Australia 5109

Telephone +61 (0)8 8285 0033 Fax +61 (0)8 8285 0044

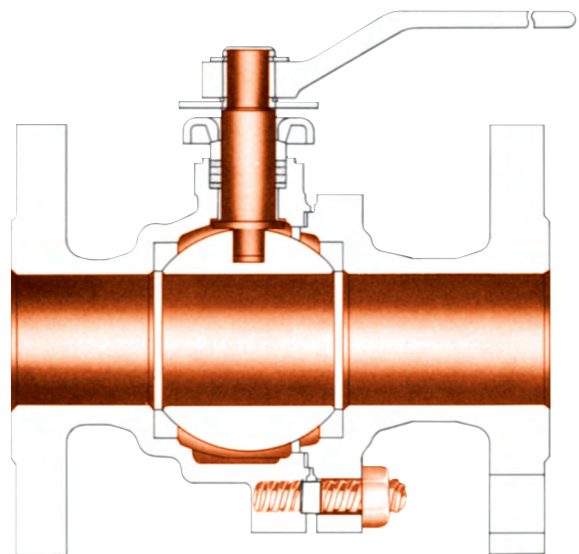
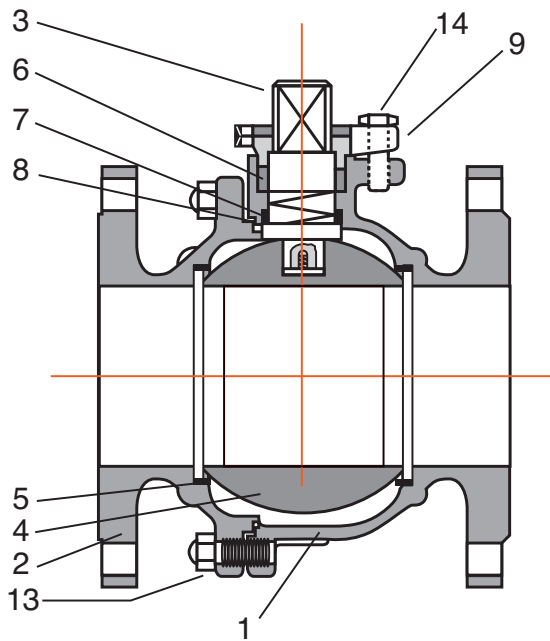
email: [admin@australianpipelinevalve.com.au](mailto:admin@australianpipelinevalve.com.au)

# Flanged 2 Piece Type Full Bore Valves Iron, Steel & Stainless



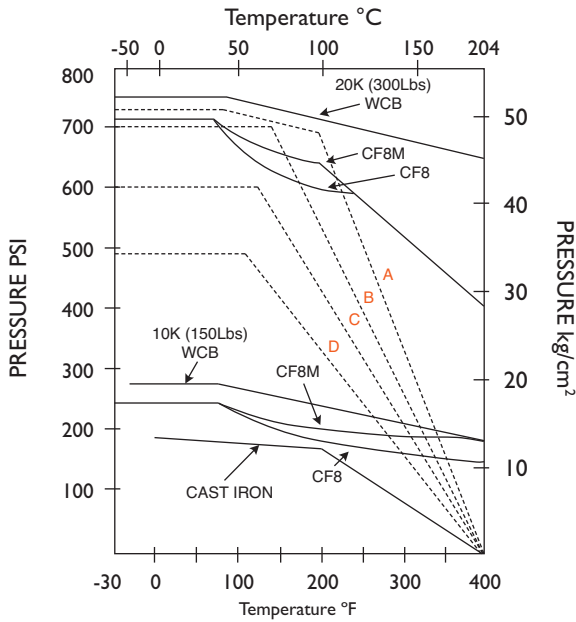
SLBV02

## TWO PIECE FULL PORT DESIGN FLANGED ENDS



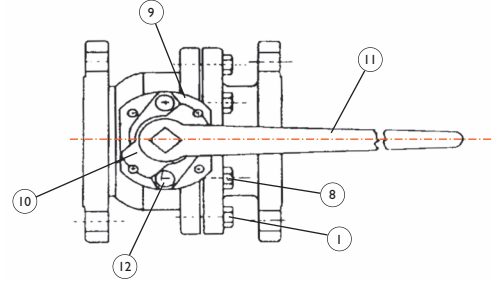
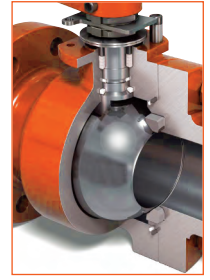


# PRESSURE RATINGS WITH REINFORCED - PTFE



- A. Valve size 15A (1/2") to 25A(1")
  - B. Valve size 40A (-1/2") to 65A(2-1/2")
  - C. Valve size 80A (3") to 100A(4")
  - D. Valve size 125A (5") to 250A(10")
- Carbon PTFE will do higher temperatures.  
PEEK, bronze PTFE and metal seat also available

- Full or reduced bore, solid or hollow Ball
- 2 piece split body design
- Temperature range -25 to 220°C
- Lever operated
- Floating Ball design, bidirectional sealing
- Vacuum service to 20 microns (133 pascals)
- ISO mount pad available on request



## MATERIAL LIST

No.	Description	Iron	S/S	S/S	Steel
1	Body	FC-20	CF8	CF8M	WCB
2	Body Cap	FC-20	SUS304	SUS316	WCB
3	Stem	304 or CR13	SUS304	SUS316	316
4	Ball	304 or CR13	SUS304	SUS316	SUS304
5	Ball Seat	PTFE	PTFE	PTFE	PTFE
6	Gland Packing	FC-20	SUS304	SUS316	WCB
7	Stem Seal	PTFE	PTFE	PTFE	PTFE
8	Joint Gasket	PTFE	PTFE	PTFE	PTFE
9	Gland Flange	FC-20	SUS304	SUS304	WCB
10	Travel Stopper	SS41	SUS304	SUS304	SS41
11	Handle	FC-20	FC-20	FC-20	FC-20
12	Gland Bolt	SS41	SUS304	SUS304	SS41
13	Body Stud/Nut	B7/2H	SUS304	SUS304	B7/2H
14	Cap Bolt	SS41	SUS304	SUS304	SS41

Indicative bill of material only. Refer as built drawing.

## DIMENSION LIST

### ANSI 125 & 150

### UNIT/MM

SIZE	INCH	1/2	3/4	1	1 1/4	1 1/2	2	2 1/2	3	4	5	6	8	10	12†
	MM	15	20	25	32	40	50	65	80	100	125	150	200	250	300
d		15	20	25	32	38	50	64	78	98	123	148	200	250	12
L		108	117	127	140	165	178	190	203	230	356	394	457	533	610
LI (Iron Body)							200	220	250	280	320	360	292/452		
D		89	98	108	117	127	152	178	190	229	254	279	343	406	433
H		90	90	110	110	130	140	155	180	180	230	260	290	420	470
I		75	75	75	75	230	230	340	340	340	380	510	720		
KG		3	3	4	5	10	11	17	23	40	100	105	170	239	430
Torque* (inch LB)		100	175	300	390	450	600	800	1200	2300	3200	4600	9980	11000	18000
CV		10	20	50	130	160	330	450	600	1200	2700	3300	9000	12000	

\* Torque is maximum breakaway at maximum differential (running torque is 1/3 of breakaway).  
Only a 20% safety factory is included.  
† Over 250NB (10") are gear operated.

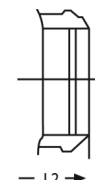
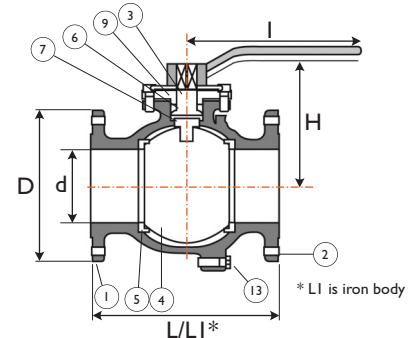
## DIMENSION LIST

### ANSI 300LB

### UNIT/MM

SIZE	INCH	1	1 1/2	2	2 1/2	3	4	6	8	10	12†
	MM	25	40	50	65	80	100	150	200	250	300
d		25	38	50	64	78	98	148	200	250	300
L		165	190	216	241	283	305	403	502	568	648
D		125	156	165	191	210	254	318	381	445	520
H		94	115	120	155	162	191	290	340	420	470
I		160	230	230	400	400	750	1000	1500		
KG		5	10	16	22	31	52	105	170	300	400
Torque * I (inch LB)		285	590	760	1390	2800	6800	11990			
CV		50	150	330	450	600	1200	3300	9000		

\* Torque is maximum breakaway at maximum differential (running torque is 1/3 of breakaway).  
Only a 20% safety factory is included.  
† Over 250NB (10") are gear operated.



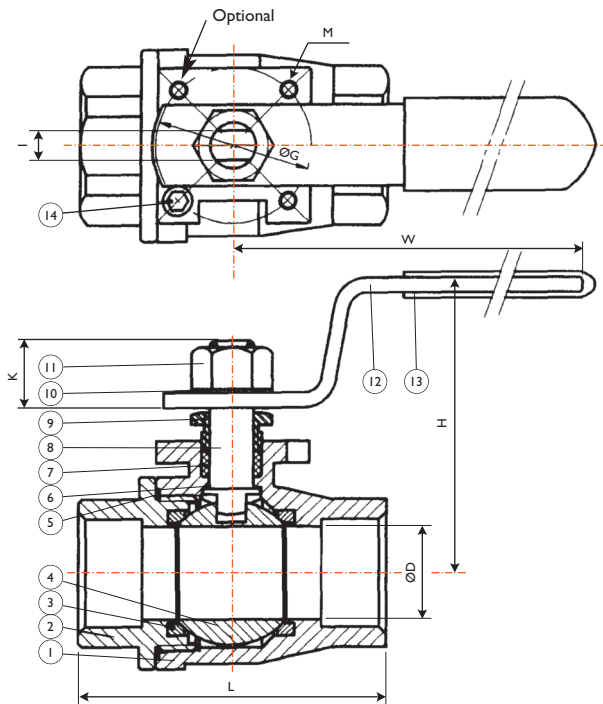
Buttweld ends also available

# 2 Piece Body 1000 PSI Ball Valves 660 Series



## FEATURES

- Reinforced TFE seats increase durability. Adjustable packing gland.
- Also available in 900 class with nylon seats
- Bottom-loaded blow-out proof stem.
- Low operating torque to reduce automation costs.
- Optional mounting pad complied with ISO 5211 for ease and interchangeability of actuation.
- Basic design complies with ANSI B16.34 & MSS SP-110.
- NPT threaded ends complies with ANSI B 1.20.1.
- BSP also available.
- Tested according to MSS SP-110/API 598.

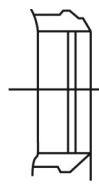


## MATERIALS LIST

No.	PARTS	
1	Body	ASTM A351-CF8M
2	End Cap	ASTM A351-CF8M
3	Seat	PTFE
4	Ball	ASTM A351-CF8M
5	Gasket	PTFE
6	Thrust Washer	PTFE
7	Stem Packing	PTFE
8	Stem	ASTM A276-316
9	Gland	AISI 304
10	Handle Washer	AISI 304
11	Handle Nut	AISI 304
12	Handle	AISI 304
13	Handle Cover	PVC
14	Stop Screw	AISI 304

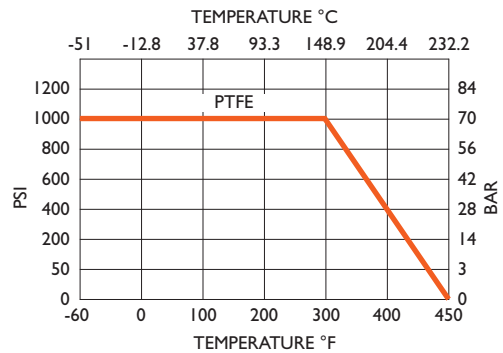
## OPTIONS

- L: Locking Device
- V: Vented Ball
- P: Equipped with Pneumatic Actuator
- M: Mounting Pad



Buttweld Ends

## PRESSURE/TEMPERATURE RATING



Optional locking device

## DIMENSIONS

SIZE		ØD	L	I	K	ØG	H	W	M
in	mm	mm	mm	mm	mm	mm	mm	mm	mm
½"	15	15	63	5	12	36	62	100	M5
¾"	20	20	73	6	13.5	36	68	121	M5
1"	25	25.4	85	8	18	42	80	153	M5
1¼"	32	32	97 / 102	8	18	42	86	153	M5
1½"	40	38	108 / 115	8	18	50	86	180	M6
2"	50	50	124 / 134	8	18	50	95	180	M6
2½"	65	65	163 / 168	12	29	70	132	265	M8
3"	80	80	185 / 191	12	29	70	143	265	M8
4"	100	100	231 / 260	13			180		

# 2 Piece Body 2000 PSI Ball Valves 660 Series



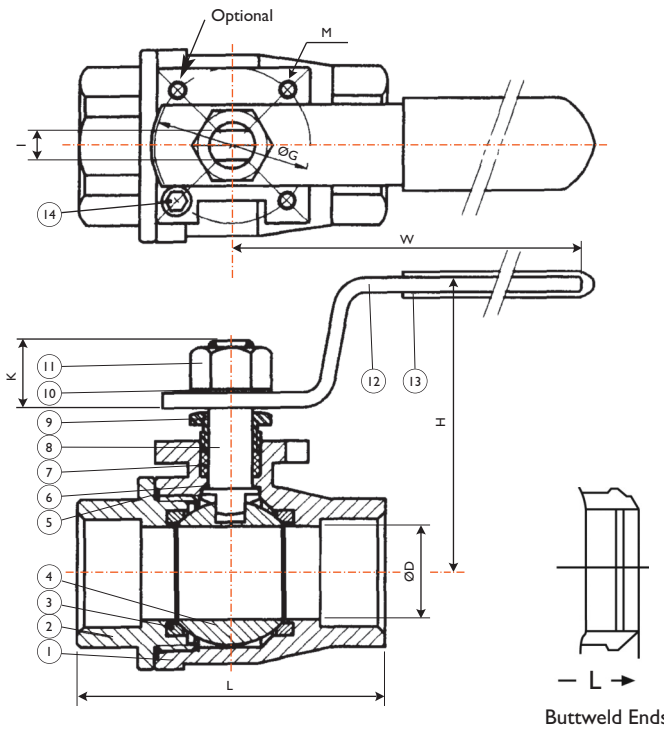
## FEATURES

- ANSI Class 800
- Reinforced TFE seats increase durability.
- Adjustable packing gland.
- Bottom-loaded blow-out proof stem.
- Low operating torque to reduce automation costs.
- Optional mounting pad complies with ISO 5211 for ease and interchangeability of actuation.
- Basic design complies with ANSI B16.34 & MSS SP-110.
- NPT threaded ends complies with ANSI B 1.20.1.
- BSP and butt weld also available.
- Tested according to MSS SP-110/API 598.



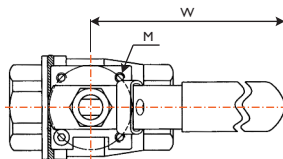
## MATERIALS LIST

No.	PARTS		
1	Body	ASTM A351-CF8M/CF8	ASTM A216-WCB
2	End Cap	ASTM A351-CF8M/CF8	ASTM A216-WCB
3	Seat	RPTFE/PTFE	RPTFE/PTFE
4	Ball	ASTM A351-CF8M/CF8	ASTM A351-CF8/304
5	Gasket	PTFE	PTFE
6	Thrust Washer	PTFE	PTFE
7	Stem Packing	PTFE	PTFE
8	Stem	ASTM A276-316	ASTM A276-304
9	Gland	AISI 304	AISI 304
10	Handle Washer	AISI 304	AISI 304
11	Handle Nut	AISI 304	AISI 304
12	Handle	AISI 304	Zinc Plated Steel
13	Handle Cover	PVC	PVC
14	Stop Screw	AISI 304	Carbon Steel



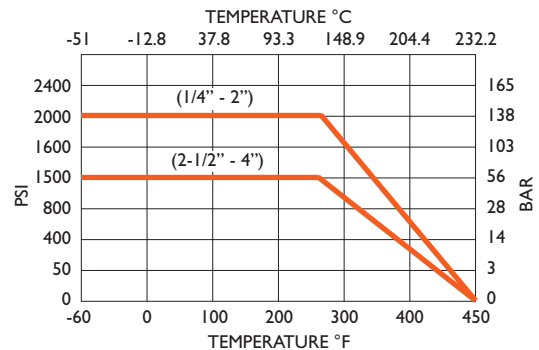
## OPTIONS

- L: Locking Device
- V: Vented Ball
- P: Equipped with Pneumatic Actuator
- M: Mounting Pad



Option:- Seal welded body version also available

## PRESSURE/TEMPERATURE RATING



Optional locking device

## DIMENSIONS

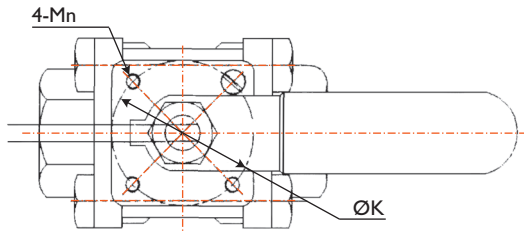
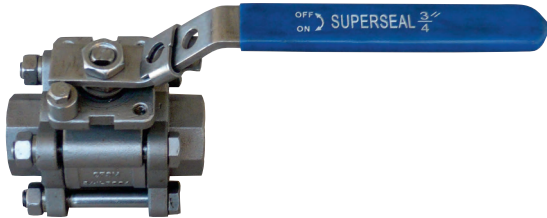
SIZE		ØD	L	I	K	ØG	H	W	M
in	mm	mm	mm	mm	mm	mm	mm	mm	mm
1/4"	8	11.6	54				50	96	
3/8"	10	12.7	60				50	96	
1/2"	15	15	61 / 63	5	12	36	62	100	M5
3/4"	20	20	73	6	13.5	36	68	121	M5
1"	25	25.4	85	8	18	42	80	153	M5
1 1/4"	32	32	97 / 102	8	18	42	86	153	M5
1 1/2"	40	38	108 / 115	8	18	50	86	80	M6
2"	50	50	124 / 134	8	18	50	95	180	M6
2 1/2"	65	65	163 / 168	12	29	70	132	265	M8
3"	80	80	185 / 191	12	29	70	143	265	M8
4"	100	100	231 / 260	*	*	*	180	*	

\* For 4" refer to separate drawing

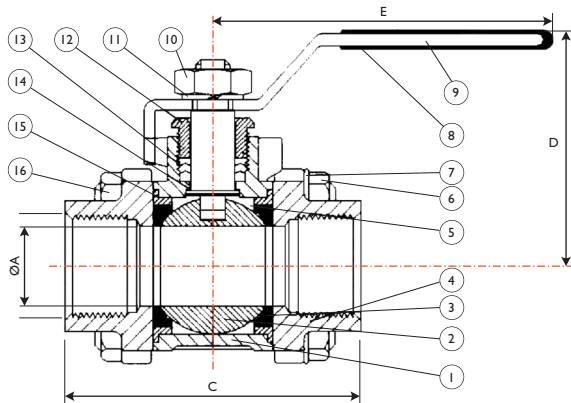
# 3-Piece 1000 PSI Ball Valve VT-3 Series



**CARBON STEEL, STAINLESS STEEL**  
**SIZE: 1/4"~ 4"**  
**THREADED END**



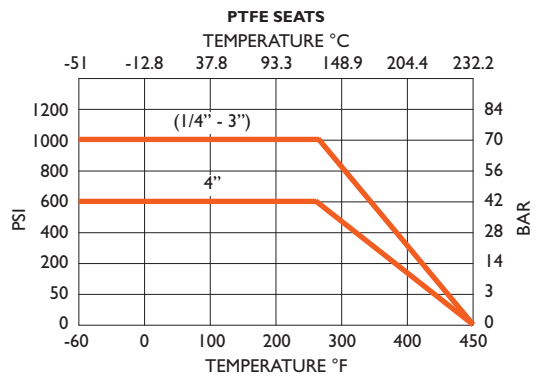
Mounting Pad ISO 5211 as option



## VT-3 FEATURES

- Full Port
- Pipe thread in accordance with ANSI B2.1, B2.21 1973, DIN 259/2999, BSP
- Locking device as option
- Blow-out proof stem/full port
- -50°C to 220°C (CF8M/CF8)
- -29°C to 220°C (WCB)

## PRESSURE/TEMPERATURE RATING



## MATERIALS LIST

No	Part Name	Material	Pcs
1	Body	CF8M	1
2	Ball	316 / CF8M	1
3	Seat	RPTFE	2
4	Cap	CF8M	2
5	Stem	316	1
6	Nut	304	4
7	Washer	304	4
8	Handle Cover	Plastic	1
9	Handle	304	1
10	Stem Nut	304	1
11	Washer	304	1
12	Gland Bushing	304	1
13	Stem Packing	PTFE	1 set
14	Thrust Washer	PTFE	1
15	Joint Gasket	PTFE	2
16	Bolt	304	4
17	Locking Pad*	304	1

\* Optional

## DIMENSIONS (FULL PORT) NPT/BSP ENDS

Size		A	C	D	E	ISO 5211*	KG
Inch	mm	mm	mm	mm	mm		
1/4"	8	11.6	65	51.0	90	F03	0.35
3/8"	10	12.7	65	56.0	90	F03	0.35
1/2"	15	15.0	74	61.0	100	F03	0.56
3/4"	20	20.0	83	64.0	100	F03	0.75
1"	25	25.0	94	73.0	135	F04	1.04
1 1/4"	32	32.0	105	78.0	135	F04	1.74
1 1/2"	40	38.0	120	87.0	170	F05	2.41
2"	50	50.0	152	96.0	170	F05	3.66
2 1/2"	65	65.0	186	145.0	260	F07	7.1
3"	80	80.0	223	155.0	260	F07	10.5
4"	100	100.0	268	181.0	280	F10	19.5

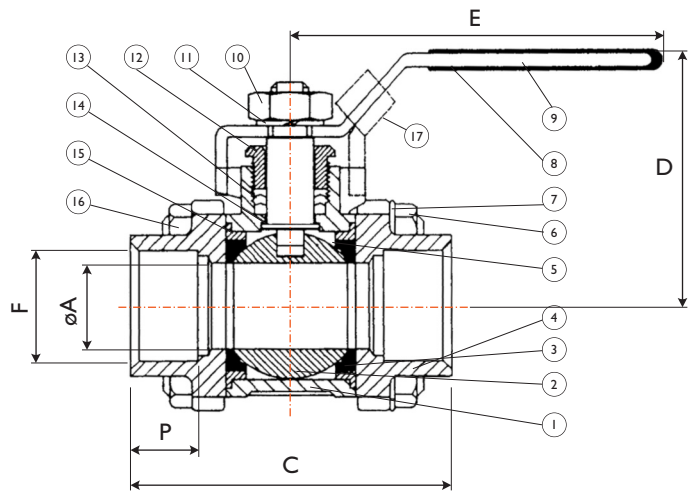
\* Optional mount pad



# VT-3 Series

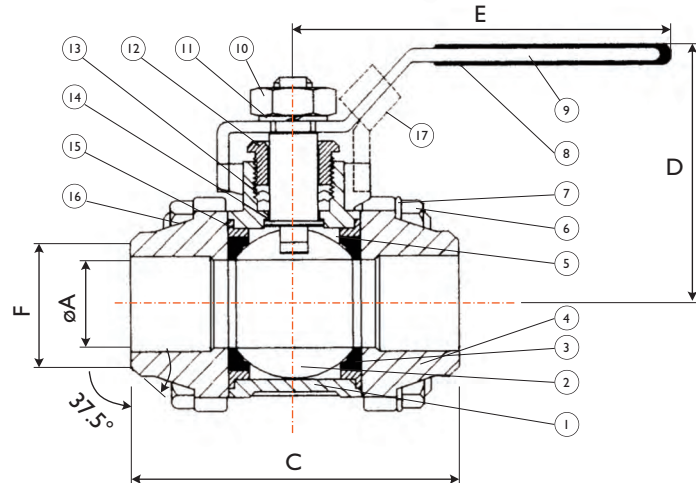
## VT-3S

SIZE: 1/4"~4"  
SOCKET WELD END



## VT-3W

SIZE: 1/4"~4"  
BUTT WELD END



Handle with locking device Optional (#17)

### DIMENSIONS (FULL PORT) BW/SW END

Size	A	B	C1	C2	D	E	F		P (SW)	KG (SW)	KG (BW)
Inch	mm	mm	mm	mm	mm	mm	BW	SW	mm	(SW)	(BW)
1/4"	8	11.6	28.5	65	65	50.0	13.5	14.1	10	0.35	0.35
3/8"	10	11.6	28.5	65	65	50.0	17.2	17.5	10	0.35	0.35
1/2"	15	12.7	32.8	75	75	60.0	21.3	21.7	10	0.56	0.56
3/4"	20	20.0	38.1	80	83	64.0	26.7	27.1	13	0.75	0.75
1"	25	25.0	43.0	90	94	71.0	33.7	33.8	14	1.00	1.04
1 1/4"	32	32.0	51.4	110	105	78.0	42.4	42.5	16	1.70	1.70
1 1/2"	40	38.0	59.5	120	120	86.0	48.3	49.5	17	2.41	2.41
2"	50	50.0	65.7	140	152	95.0	60.3	61.0	19	3.66	3.80
2 1/2"	65	65.0	82.3	185	186	130.0	76.1	77.0	19	7.10	7.6
3"	80	80.0	91.3	205	223	148.0	88.9	90.0	20	10.50	11.8
4"	100	100.0	118.0	240	268	173.0	115.0	115.2	21	19.50	21.2

### MATERIALS LIST

No	Part Name	Material	Pcs
1	Body	CF8M	1
2	Ball	316 / CF8M	1
3	Seat	RPTFE	2
4	Cap	CF8M	2
5	Stem	316	1
6	Nut	304	4
7	Washer	304	4
8	Handle Cover	Plastic	1
9	Handle	304	1
10	Stem Nut	304	1
11	Washer	304	1
12	Gland Bushing	304	1
13	Stem Packing	PTFE	1 set
14	Thrust Washer	PTFE	1
15	Joint Gasket	PTFE	2
16	Bolt	304	4
17	Locking Pad*	304	1

\* Option

## TORQUES

Torque Values (Nm) - Reinforced Filled PTFE Seats									
LINE PRESSURE MPA									
Valve Size mm	1	2	3	4	5	7	9	10.3	Stem Limiting Torque (Nm)
8, 10, 15	5	5	5	5	5	5	5	5	26
20	8	8	8	8	9	10	10	10	26
25	12	12	12	13	14	16	16	17	75
32	17	17	17	18	19	22	24	26	85
40	22	22	22	24	25	27	29	31	85
50	32	32	32	34	36	40	41	42	85
65	45	55	66	75	76				250
80	110	130	144	146	154				390
100	140	170	200	240	250				390

When conditions below apply then calculate torque using the following application factors:

Frequency of Operation  
 Less than once per week  
 Less than once per week  
 Less than once per year

+25%  
 +40%  
 +60%

Service Conditions  
 Light slurry semi solids  
 Heavy slurry and some solids  
 Temperature - Minus 40°C to minus 20°C  
 Minus 20°C to 0°C

+40%  
 +75%  
 +75%  
 +25%

## Cv FACTOR

Size mm	Cv Factor gpm
8	7
10	8
15	11
20	30
25	50
32	80
40	130
50	270
80	400
100	820

## ACTUATED VERSION

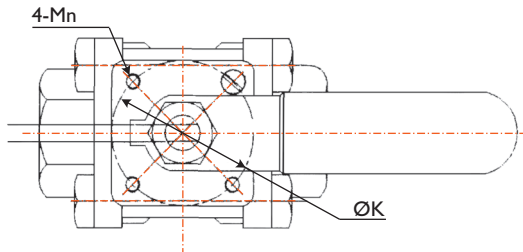
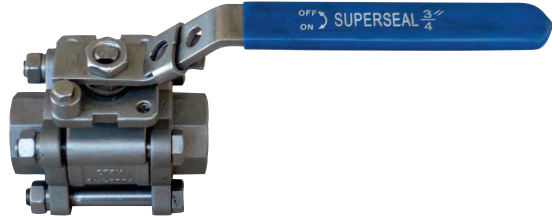


AS 4629

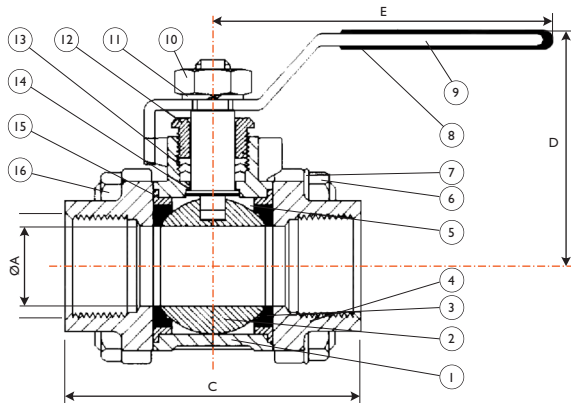
# 3-Piece 1500 PSI/2000 PSI Ball Valve HVT-3 Series



**CARBON STEEL, STAINLESS STEEL**  
**SIZE: 1/4" ~ 4"**  
**THREADED ENDS**



Mounting Pad ISO 521 I as option

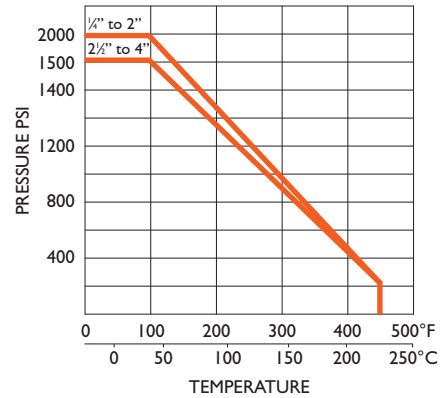


## HVT-3 FEATURES

- Pipe thread in accordance with ANSI B2.1, B2.21 1973, DIN 259/2999
- Locking device as option
- Blow-out proof stem/full port
- -50°C to 220°C (CF8M/CF8)
- -29°C to 220°C (WCB)

## PRESSURE/TEMPERATURE RATING

RPTFE SEATS



## MATERIALS LIST

No	Part Name	Material	Pcs
1	Body	WCB/CF8/CF8M	1
2	Ball	316	1
3	Seat	RTFE	2
4	Cap	WCB/CF8/CF8M	2
5	Stem	316	1
6	Nut	304	4
7	Washer	304	4
8	Handle Cover	Plastic	1
9	Handle	304	1
10	Stem Nut	304	1
11	Washer	304	1
12	Gland Bushing	304	1
13	Stem Packing	PTFE	1 set
14	Thrust Washer	PTFE	1
15	Joint Gasket	PTFE	2
16	Bolt	304	4
17	Locking Pad*	304	1

\* Option

## DIMENSIONS (FULL PORT) NPT/BSP ENDS

Size		A	C	D	E	ISO 521 I*	KG
Inch	mm	mm	mm	mm	mm		
1/4"	8	11.6	65	56.0	135	F03	0.4
3/8"	10	12.7	65	56.0	135	F03	0.4
1/2"	15	15.0	74	61.0	135	F03	0.56
3/4"	20	20.0	83	67.0	135	F03	0.75
1"	25	25.0	94	72.0	165	F04	1.04
1 1/4"	32	32.0	106	78.0	165	F04	1.74
1 1/2"	40	38.0	120	92.0	175	F05	2.6
2"	50	50.0	136	100	175	F05	4.7
2 1/2"	65	65.0	167	145	260	F07	7.6
3"	80	80.0	189	156	260	F07	11.8
4"	100	100	233	188	280	F10	20.7

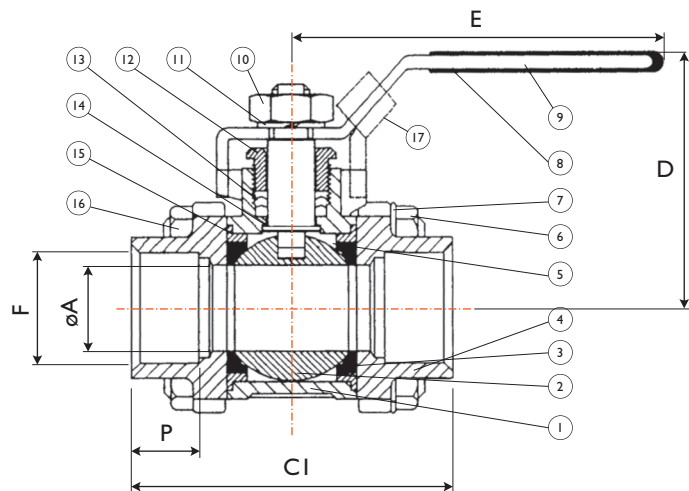
\* Optional mount pad

# HVT-3 Series

## HVT-3S

SIZE: 1/4"~3"

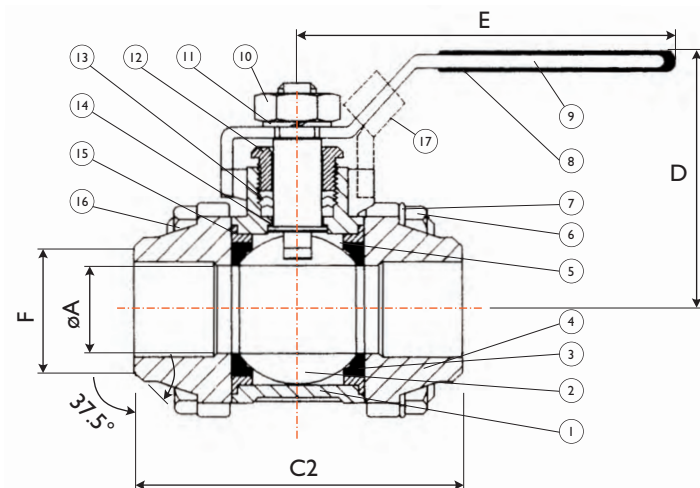
SOCKET WELD END



## HVT-3W

SIZE: 1/4"~3"

BUTT WELD END



Handle with locking device Optional (#17)

### DIMENSIONS (FULL PORT) BW/SW ENDS

Size		A	CI	C2	D	E	F		P (SW)	KG	KG
Inch	mm	mm	mm	mm	mm	mm	BW	SW	mm	(BW)	(SW)
1/4"	8	11.6	65	65	56.0	135	13.5	14.1	10	0.4	0.4
3/8"	10	12.7	65	65	56.0	135	17.2	17.5	10	0.4	0.4
1/2"	15	15.0	74	74	61.0	135	21.3	21.7	11	0.56	0.56
3/4"	20	20.0	83	83	67.0	135	26.7	27.1	13	0.75	0.75
1"	25	25.0	94	94	72.0	165	33.7	33.8	14	1.04	1.04
1 1/4"	32	32.0	105	105	78.0	165	42.4	42.6	16	1.74	1.75
1 1/2"	40	38.0	120	120	92.0	175	48.3	49.5	16	2.6	2.6
2"	50	50.0	136	152	100	175	60.3	61.0	19	5.2	4.7
2 1/2"	65	65.0	167	186	145.0	260	76.1	77.0	19	8.5	7.6
3"	80	80.0	189	223	156.0	260	88.9	90.0	20	13.9	11.8
4"	100	100	233	268	182.0	280	115	115.4	21	23.7	20.7

### MATERIALS LIST

No	Part Name	Material	Pcs
1	Body	WCB/CF8/CF8M	1
2	Ball	304 / 316	1
3	Seat	RTFE	2
4	Cap	WCB/CF8/CF8M	2
5	Stem	316	1
6	Nut	304	4
7	Washer	304	4
8	Handle Cover	Plastic	1
9	Handle	304	1
10	Stem Nut	304	1
11	Washer	304	1
12	Gland Bushing	304	1
13	Stem Packing	PTFE	1 set
14	Thrust Washer	PTFE	1
15	Joint Gasket	PTFE	2
16	Bolt	304	4
17	Locking Pad*	304	1

\* Option

## TORQUES

Torque Values (Nm) - Reinforced Filled PTFE Seats									
LINE PRESSURE MPA									
Valve Size mm	1	2	3	4	5	7	9	10.3	Stem Maximum Torque (Nm)
8, 10, 15	6	6	6	6	6	6	7	8	26
20	8	8	8	8	9	10	10	12	26
25	12	12	12	13	14	16	16	19	75
32	17	17	17	18	19	22	28	30	85
40	22	22	22	24	25	27	33	35	85
50	32	32	32	34	36	40	46	48	85
65	45	55	65	75	90				250
80	110	130	144	160	170				390

Consult us for higher pressures. When conditions below apply, then calculate torque using the following application factors:

Frequency of Operation		Service Conditions	
Less than once per week	+28%	Light slurry semi solids	+40%
Less than once per week	+40%	Heavy slurry and some solids	+75%
Less than once per year	+60%	Temperature - Minus 40°C to minus 20°C	+75%
		Minus 20°C to 0°C	+25%

### Cv FACTOR

Size mm	Cv Factor gpm
8	7
10	8
15	11
20	30
25	50
32	80
40	130
50	270
80	400

### ACTUATED VERSION



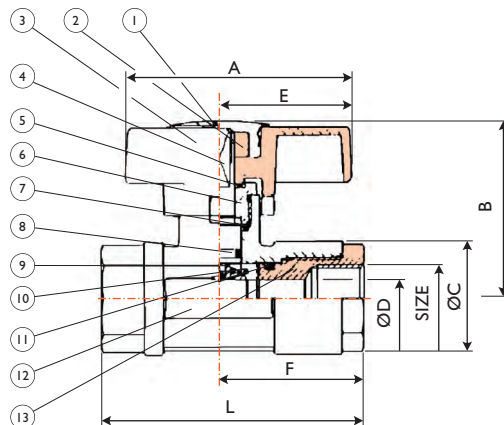
AS 4629



# High Pressure Budget Valve 3000 PSI WOG



Ball valve for high pressure  
with T-handle 3/8" - 1" Italian made



## TECHNICAL FEATURES

- Temperature: From -20 to + 80°C
- Pressure: 210 bar as a maximum
- Application Fields: Hydraulics, pneumatics, general industrial installations
- Threaded Ends: Female according to UNI-ISO 7/1 Rp  
Also available in NPT

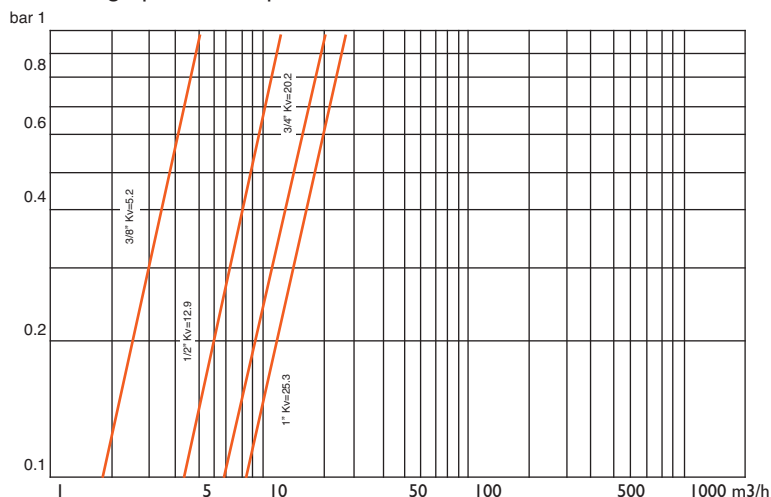
No.	PART	MATERIALS
1	T-handle protection cover	Chromium Plated Brass
2	T-handle nut	Zinc Plated Steel
3	T-handle	Die-cast aluminium alloy, polyurethane coated
4	Stem	Machined from Brass bar OT 58
5	Anti-friction ring	Virgin PTFE
6	Gland	Virgin PTFE
7	Stem Packing	Filled PTFE
8	Stem Seal	O-ring VITON
9	Ball	Machined from Brass Bar
10	Seat	DELRIN
11	End Seal	O-ring VITON
12	Body with Female End	Hot stamped from Brass Bar OT 58
13	Female End	Hot stamped from Brass Bar OT 58

## DIMENSIONS

Nominal diameter mm	10	15	20	25
Size in inches	3/8"	1/2"	3/4"	1"
ø bore mm	8	12	16	20
A mm	73	73	110	110
B mm	54	56	75	77
øC mm	30	36	45	53
E mm	43	43	68	68
F mm	44	47	54	56
L mm	75	85	95	105
Weight gr.	480	630	1160	1550
Pieces per box nr.	12	8	6	4
Pieces per carton nr.	96	64	48	32
Nett carton weight Kg.	45.9	40.3	55.6	49.6

## PORT CAPACITY AND LOSS OF HEAD DIAGRAM

The Kv is the index port capacity expressed in cubic metres per hour, causing a pressure drop of 1 bar with water at 15°C.















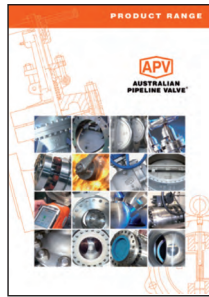
**AUSTRALIAN PIPELINE VALVE®**

**COMPLETE PRODUCT LINE**

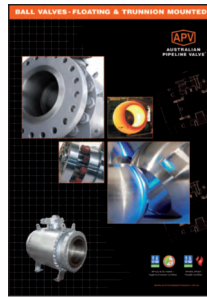
**“Australian Pipeline Valve produces isolation, control and flow reversal protection products for severe and critical service media in utility, steam, pipelines, oil & gas and process industries. APV valves and pipeline products form the most competitive portfolio in the market.”**



**AUSTRALIAN PIPELINE VALVE BRAND RANGE - CATALOGUES**



**Product Brochure**



**Ball Valves Floating & Trunnion Mounted**



**Ball Valves Floating Small Bore**



**Ball Valves Special Service**



**Oilfield Products Valves & Wellheads**



**Gate, Globe & Check Valves - Cast**



**Gate, Globe & Check Valves - Forged Steel**



**Plug Valves Lubricated, Sleeved & Lined**

**APV FAMILY OF BRANDS RANGE - CATALOGUES**



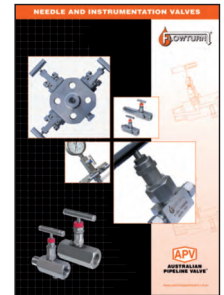
**Diamond Gear Gearboxes**



**Flowturn Ball Valves Multiway & Deadman**



**Flowturn Gate, Globe & Check Valves**



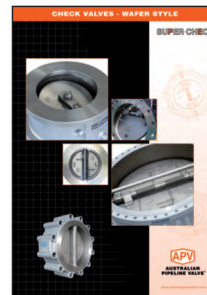
**Flowturn Instrument Valves**



**Flowturn Strainers & Sight Glasses**



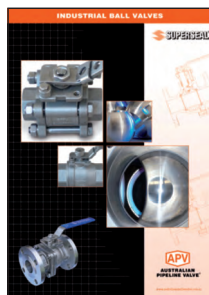
**Steamco Steam Valves**



**Supercheck Wafer Check Valves**



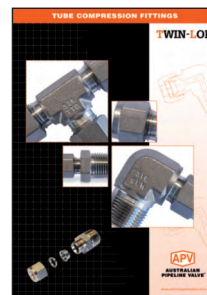
**Superseal Butterfly Valves**



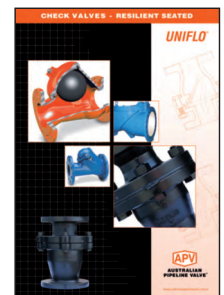
**Superseal Industrial Ball Valves**



**Torqturn Actuators**



**TwinLok Tube Fittings**

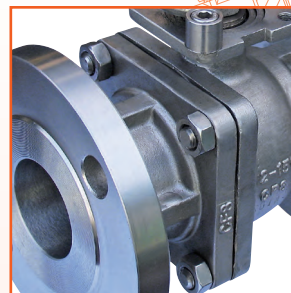


**Uniflo Check Valves**

**Contact us for your local stockist/distributor**

# APV AUSTRALIAN PIPELINE VALVE®

ADELAIDE • BRISBANE • PERTH



[www.australianpipelinevalve.com.au](http://www.australianpipelinevalve.com.au)

LOCAL DISTRIBUTOR



## QUALITY ASSURANCE AND CERTIFICATION

We are continually improving all facets of quality assurance. Full metallurgical and test certificates are always supplied for all pressure retaining parts, we also provide it on all major trim components.

We have endeavoured to provide a broad outline of our range and capabilities. Because we are continually developing new products for our customers this catalogue will, to some extent be incomplete. This catalogue is a general overview only, individual drawings and data sheets can be furnished on request.

If you have any requirement in the field of valves, please contact us for a prompt response. Continuous development of Australian Pipeline Valve products may necessitate changes in the design or manufacturing processes. Australian Pipeline Valve reserves the right to effect any such changes without prior notice.

