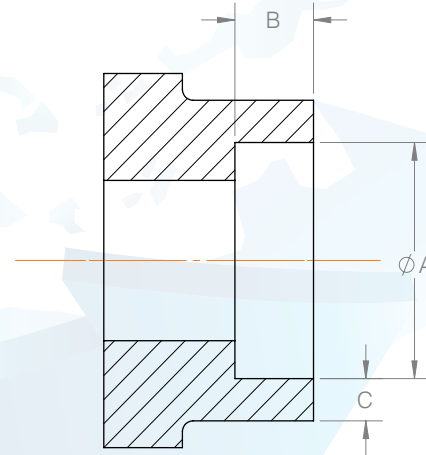


ASME B16.11 Socket Weld End Dimensions

Class		A-Socket bore diameter-min.		B-Socket bore depth-min.		C-Wall thickness-min.											
		150 to 2500		150 to 2500		150/300		600		800		900		1500		2500	
NPS	DN	mm	inch	mm	inch	mm	inch	mm	inch	mm	inch	mm	inch	mm	inch	mm	inch
1/2	15	218.	.858	9.5	0.374	3.3	0.13	4.1	0.16	4.1	0.16	5.3	0.21	5.3	0.21	8.1	0.32
3/4	20	27.2	1.071	12.5	0.492	3.6	0.14	4.3	0.17	4.3	0.17	6.1	0.24	6.1	0.24	8.6	0.34
1	25	33.8	1.331	12.5	0.492	3.8	0.15	5.1	0.20	5.1	0.20	6.9	0.27	6.9	0.27	9.9	0.39
1 1/4	32	42.5	1.673	12.5	0.492	3.8	0.15	5.3	0.21	5.3	0.21	7.1	0.28	8.1	0.32	11.7	0.46
1 1/2	40	48.6	1.913	12.5	0.492	4.1	0.16	5.6	0.22	5.8	0.23	7.9	0.31	8.9	0.35	13.0	0.51
2	50	61.1	2.406	16.0	0.630	4.6	0.18	6.1	0.24	6.9	0.27	9.7	0.38	10.7	0.42	15.7	0.62
2 1/2	65	73.9	2.909	16.0	0.630	5.6	0.22	7.6	0.30	7.9	0.31	10.4	0.41	12.4	0.49	18.5	0.73

Note: for EN ISO 17292 standard data is only applicable up to 800 class.



© Copyright Global Supply Line 2020

Global Supply Line Pty Ltd ABN 86 008 134 512

Head Office - 1-19 Barndioota Rd Salisbury Plain South Australia 5109 Ph +61 (0)8 8285 0000 Fax +61 (0)8 8285 0088 www.globalsupplyline.com.au