

# SFEROVA



APIQ1



0212230



ISO 9001



97/23/EC



Sferova SRL have been a trusted name around the world since 1972. Sferova manufacture forged steel trunnion mounted ball valves up to 900NB in Class 150 to 2500 and API up to 15,000PSI. Global Supply Line (GSL) are sole agents for Australia, New Zealand & Papua New Guinea. Sferova utilise the time proven B5/E2 design for it's split body 3 piece forged ball valve range. Sferova also manufactures top entry and welded body design ball valves as well as double block and bleed twin ball valves. Numerous majors are using Sferova worldwide.



Global Supply Line keep a large inventory of Sferova trunnion mounted ball valves from 150 class to 2500 class with features like PEEK seats, metal seats, Elast-O-Lion 985/ AED O-rings, Graphite seals etc. GSL has a fully equipped valve automation centre allowing us to fit all brands of actuators & controls in fast delivery.

- High quality forged construction, precision manufactured for long life and time proven as reliable high quality product.
- Fast track delivery and factory back up of sub assembled stock.
- Fugitive Emission Prototype tested (floating & trunnion) 3rd party certified witnessed.
- Firesafe certified throughout entire range API6FA, API607, BS6755 and ISO 10497-5.

Sferova also manufacture rack & pinnion piston style pneumatic actuators in a wide range of sizes up to 30,000 NM. Global Supply Line keeps a full range of Sferova actuators ex-stock.





# Sferova

## PERFIL E QUALIDADE DA COMPANHIA COMPANY PROFILE & QUALITY

Uma equipa jovem e dinâmica, inspirada pela missão de oferecer soluções a nível mundial no sector da intercepção dos fluidos; pessoal qualificado por uma longa experiência na projectação e produção de VÁLVULAS DE ESFERA industriais. Uma sociedade que trabalha com afinco para responder aos novos desafios do mercado internacional. Fundada em 1972, nos arredores da florescente Milão, a SFEROVA concentra e especializa, desde o início, a sua própria produção de VÁLVULAS DE ESFERA.

Ao longo dos seus 30 anos de experiência, a SFEROVA atingiu uma posição significativa no campo das válvulas de processo, aplicadas em todos os sectores da indústria química, petroquímica, energética, farmacêutica e alimentar.

Tecnologias de produção de vanguarda e modernos sistemas de gestão asseguram processos produtivos eficientes, garantindo elevados padrões de qualidade para a gama completa de válvulas.

As válvulas de esfera SFEROVA são projectadas, produzidas e testadas de acordo com um Sistema de Qualidade acreditado segundo ISO 9001, P.E.D. 97/23/EC e d API Espec. Q1.

A produção é completamente testada segundo as normas internacionais mais difundidas; a pedido, podem-se realizar testes especiais.

As válvulas de esfera SFEROVA podem ser certificadas segundo EN 10204 e fornecidas (se aplicável) com marcação CE e/ou Monograma API Espec. 6D.

*Inspired by the mission of offering world-class solutions in the area of fluid handling, a group of young people with qualified experience in design and manufacture of industrial BALL VALVES is strongly working to develop a world-wide production system.*

*Since their establishment in 1972, SFEROVA have always been recognised for their high quality production of industrial BALL VALVES.*

*Today, SFEROVA is located just north of Milan and can draw upon a wealth of highly qualified and hugely experienced personnel. State-of-the-art manufacturing facilities and modern quality management methods are employed in the production of process ball valves which are used in various applications such as Chemical Plants, Petrochemical, both on and offshore, Power Generation, Pharmaceutical and the Food industry.*

*SFEROVA ball valves are designed, produced and tested under an accredited Quality System in compliance with UNI-EN-ISO 9001, P.E.D. 97/23/EC and API Spec. Q1. Production is 100% tested in accordance with main international standards and special testing can be performed upon request. SFEROVA ball valves can be certified to EN 10204 and supplied, when applicable, complete with CE marking and/or API Spec. 6D Monogram.*



# SFEROVA



Sede e Fábrica/Head Office and Factory:

**Sferova s.r.l.**  
Via delle Industrie, 30/32  
20884 SULBIATE MB - Italy  
Tel. +39 039 6079599  
Fax +39 039 6079582  
[www.sferova.com](http://www.sferova.com)  
[info@sferova.com](mailto:info@sferova.com)

Válvulas de esfera  
Ball valves





# Válvulas de esfera Ball valves



**SFEROVA**



## TQ2

Válvulas de esfera flutuante tipo corpo bipartido  
*Split body floating ball valves*



- Válvulas de esfera flutuante tipo corpo bipartido. Corpo aparafusado em duas ou três peças, com extremidades flangeadas ASME B16.5 e distância entre flanges ASME B16.10. Passagem total ou reduzida. Projectadas e fabricadas segundo ASME B16.34, API 6D e ISO 17292. Certificado Fire Safe BS 6755 Parte 2 e API 6FA. Dispositivo anti-estático e haste anti-expulsão.
- *Split body floating ball valves. Two or three piece bolted body, with flanged ends to ASME B16.5, welded ends to ASME B16.25 or clamp type, and face to face to ASME B16.10. Full or reduced bore. Design and construction in accordance with ASME B16.34, API 6D and ISO 17292. Fire Safe certified to BS 6755 Part 2 and API 6FA. Antistatic device and antiblow-out stem.*

TIPO/TYPE	TAMANHO/SIZE	CLASSE/CLASS
<b>TQ2</b>	de/ from ½" a/ to 8"	de/ from ANSI 150 a/ to 2.500 de/ from API 2.000 a/ to 15.000

### Materials - *Materials:*

Aço carbono, aço inoxidável, duplex, super-duplex, ligas especiais, titânio.  
*Carbon steel, stainless steel, duplex, super-duplex, special alloys, titanium.*

## TM3

Válvulas de esfera e munhão montado com entrada lateral  
*Side entry trunnion mounted ball valves*



- Válvulas de esfera munhão tipo corpo bipartido. Corpo aparafusado em duas ou três peças, com extremidades flangeadas ASME B16.5 e distância entre flanges ASME B16.10. Passagem total ou reduzida. Projectadas e fabricadas segundo ASME B16.34, API 6D e ISO 17292. Certificado Fire Safe BS 6755 Parte 2 e API 6FA. Dispositivo anti-estático e haste anti-expulsão.
- *Split body trunnion mounted ball valves. Two or three piece bolted body, with flanged ends to ASME B16.5, welded ends to ASME B16.25 or clamp type, and face to face to ASME B16.10. Full or reduced bore. Design and construction in accordance with ASME B16.34, API 6D and ISO 17292. Fire Safe certified to BS 6755 Part 2 and API 6FA. Antistatic device and antiblow-out stem.*

TIPO/TYPE	TAMANHO/SIZE	CLASSE/CLASS
<b>TM3</b>	de/ from ½" a/ to 40"	de/ from ANSI 150 a/ to 2.500 de/ from API 2.000a/ to 15.000

### Materials - *Materials:*

Aço carbono, aço inoxidável, duplex, super-duplex, ligas especiais, titânio.  
*Carbon steel, stainless steel, duplex, super-duplex, special alloys, titanium.*

## IGI

Válvulas de esfera flutuante metal-metal e munhão montado.  
*Metal to metal floating and trunnion mounted ball valves*



- Válvulas de esfera flutuante e munhão, tipo corpo bipartido, metal-metal, para uso a temperaturas extremamente altas ou baixas, abrasivo ou corrosivo. Corpo aparafusado em duas ou três peças, com extremidades flangeadas ASME B16.5 e distância entre flanges ASME B16.10. Passagem total ou reduzida. Projectadas e fabricadas conforme a ASME B16.34, API 6D e ISO 17292. Certificado Fire Safe BS 6755 Parte 2, API 6FA e API 607. Dispositivo anti-estático e haste anti- expulsão.
- *Split body metal seated floating and trunnion ball valves for services in extreme both high and low temperatures, abrasive or corrosive. Two or three piece bolted body with flanged ends to ASME B16.5, welded ends to ASME B16.25 or clamp type, and face to face to ASME B16.10. Full or reduced bore. Design and construction in accordance with ASME B16.34, API 6D and ISO 17292. Fire safe certified to BS 6755 Part 2, API 6FA and API 607. Antistatic device and antiblow-out stem.*

TIPO/TYPE	TAMANHO/SIZE	CLASSE/CLASS
<b>IGI-F</b> <b>IGI-T</b>	de/ from ½" a/ to 3" de/ from 2" a/ to 40"	de/ from ANSI 150 a/ to 2.500 de/ from API 2.000 a/ to 15.000

### Materials - *Materials:*

Aço carbono, aço inoxidável, duplex, super-duplex, ligas especiais, titânio.  
*Carbon steel, stainless steel, duplex, super-duplex, special alloys, titanium.*

## TEV

Válvulas de esfera com munhão montado na entrada superior  
*Top entry trunnion mounted ball valves*



- Forjadas ou fundidas, projectadas para usos intensos e sem necessidade de intervenções de manutenção. Extremidades flangeadas segundo ASME B16.5, soldadas de acordo com as ASME B16.25 ou com juntas tipo "grampo", distância entre flanges ASME B16.10. Fabricadas conforme as ASME B16.34, API 6D e ISO 17292. Certificado Fire Safe segundo API607.
- *Forged or cast material engineered for heavy duty, maintenance-free performance. Flanged ends to ASME B16.5, welded ends to ASME B16.25 or clamp type, face to face to ASME B16.10. Design and construction in accordance to ASME B16.34, API 6D and ISO 17292. Fire safe certified to API 607.*

TIPO/TYPE	TAMANHO/SIZE	CLASSE/CLASS
<b>TEV</b>	de/ from 2" a/ to 24"	de/ from ANSI 150 a/ to 2.500 de/ from API 2.000 a/ to 15.000

### Materials - *Materials:*

Aço carbono, aço inoxidável, duplex, super-duplex, ligas especiais, titânio.  
*Carbon steel, stainless steel, duplex, super-duplex, special alloys, titanium.*

## DBB

Válvulas de esfera flutuante com duplo bloqueio e dreno e munhão montado  
*Double block and bleed floating and trunnion mounted ball valves*



- Válvulas de esfera flutuante e munhão, tipo duplo bloqueio e dreno (double block & bleed). Extremidades flangeadas com juntas tipo "grampo". Projectação e fabrico segundo as normas internacionais de referência e de acordo com as especificações do cliente.
- *Double block and bleed, valves, floating and trunnion mounted ball design. Flanged, welded, clamp type ends. Design and construction according to international standards or customer specifications.*

TIPO/TYPE	TAMANHO/SIZE	CLASSE/CLASS
<b>DBB</b>	De acordo com as especificações do cliente <i>According to customer specifications</i>	de/ from ANSI 150 a/ to 2500 de/ from API 2.000 a/ to 15.000

### Materials - *Materials:*

Aço carbono, aço inoxidável, duplex, super-duplex, ligas especiais, titânio.  
*Carbon steel, stainless steel, duplex, super-duplex, special alloys, titanium.*

## CRY

Válvulas criogénicas de esfera flutuante e munhão montado  
*Cryogenic ball valves floating and trunnion mounted design*



- Válvulas de esfera flutuante e munhão com haste alongada. Os materiais utilizados e as guarnições são projectados e testados especificamente para satisfazerem as utilizações no sector criogénico.
- *Floating and trunnion mounted ball valves, with extended bonnet, materials and seals specifically engineered and tested to suit cryogenic applications.*

TIPO/TYPE	TAMANHO/SIZE	CLASSE/CLASS
<b>CRY</b>	de/ from ½" a/ to 40"	de/ from ANSI 150 a/ to 2.500 de/ from API 2.000 a/ to 15.000

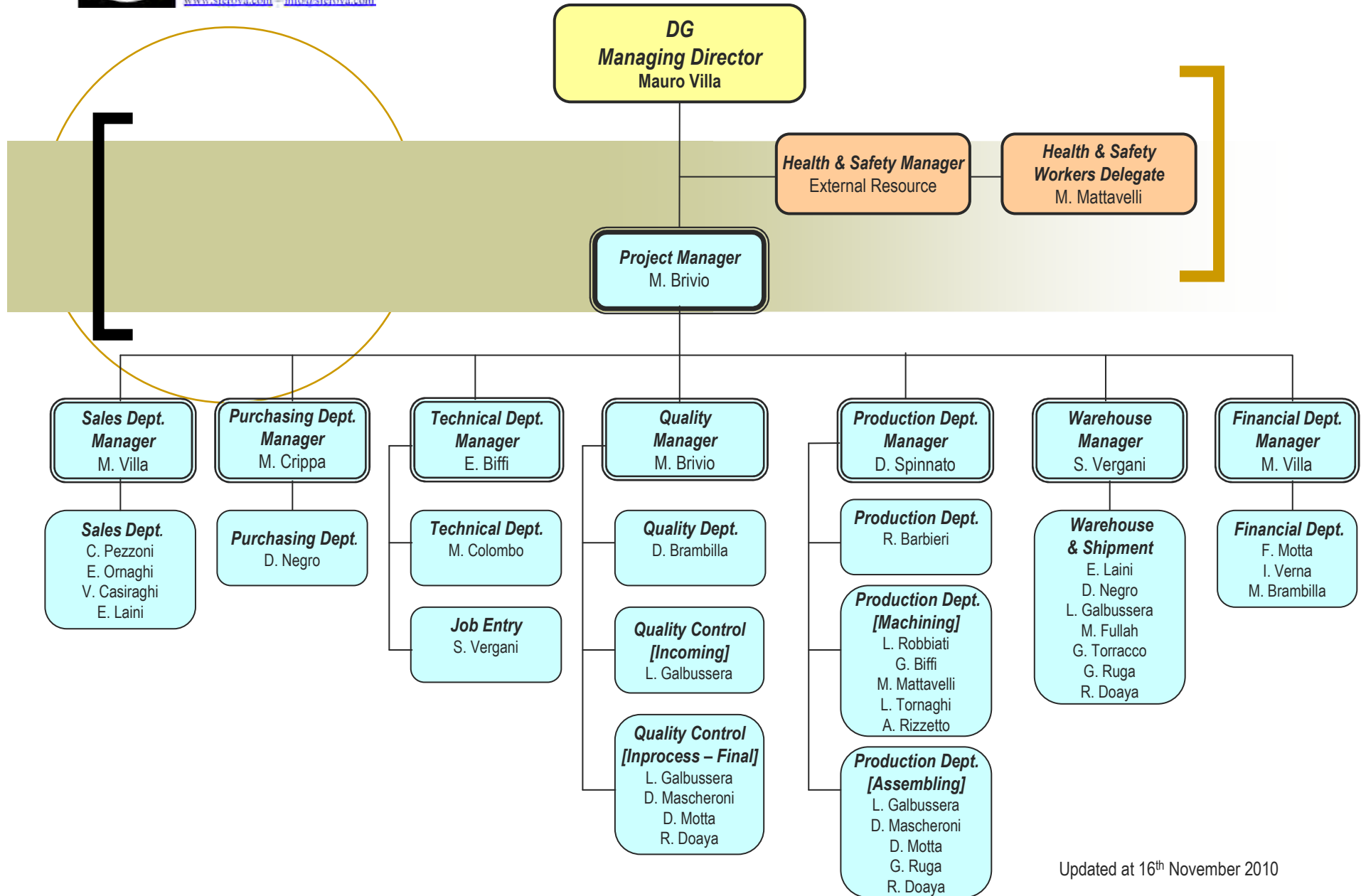
### Materials - *Materials:*

Aptos a satisfazer as condições de serviço.  
*To suit service conditions.*

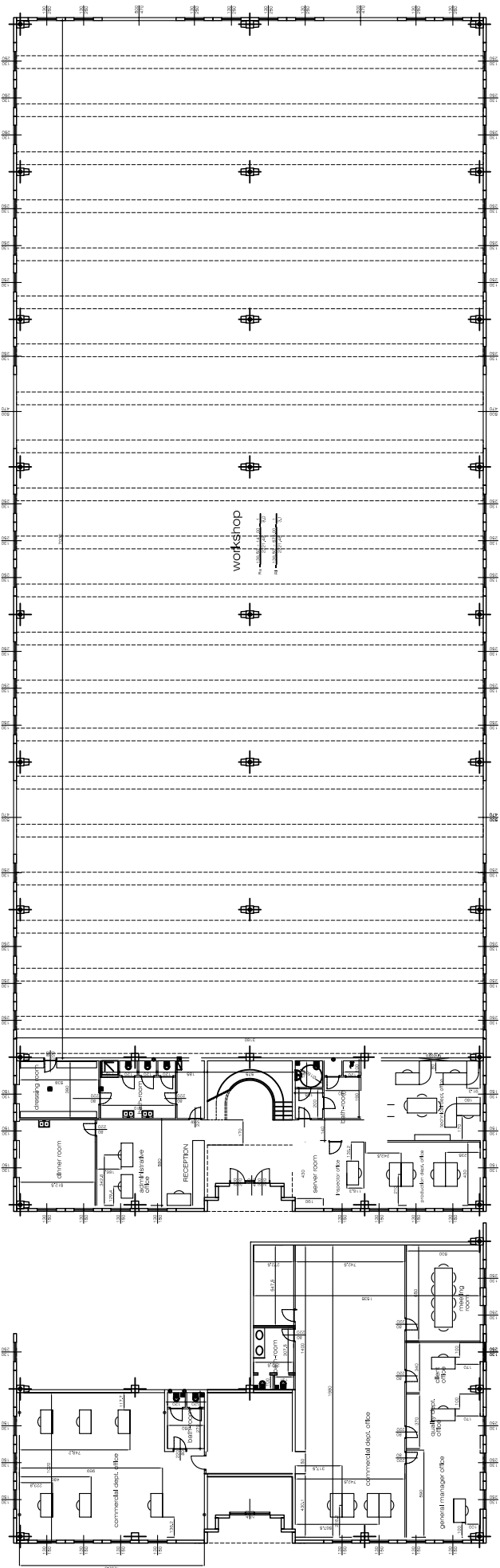


**SFEROVA S.r.l.**

Via delle Industrie, 30/32  
20050 SULBIATE - MI - ITALY  
Tel. 039-6079599 Fax 039-6079582  
[www.sferova.com](http://www.sferova.com) - [info@sferova.com](mailto:info@sferova.com)

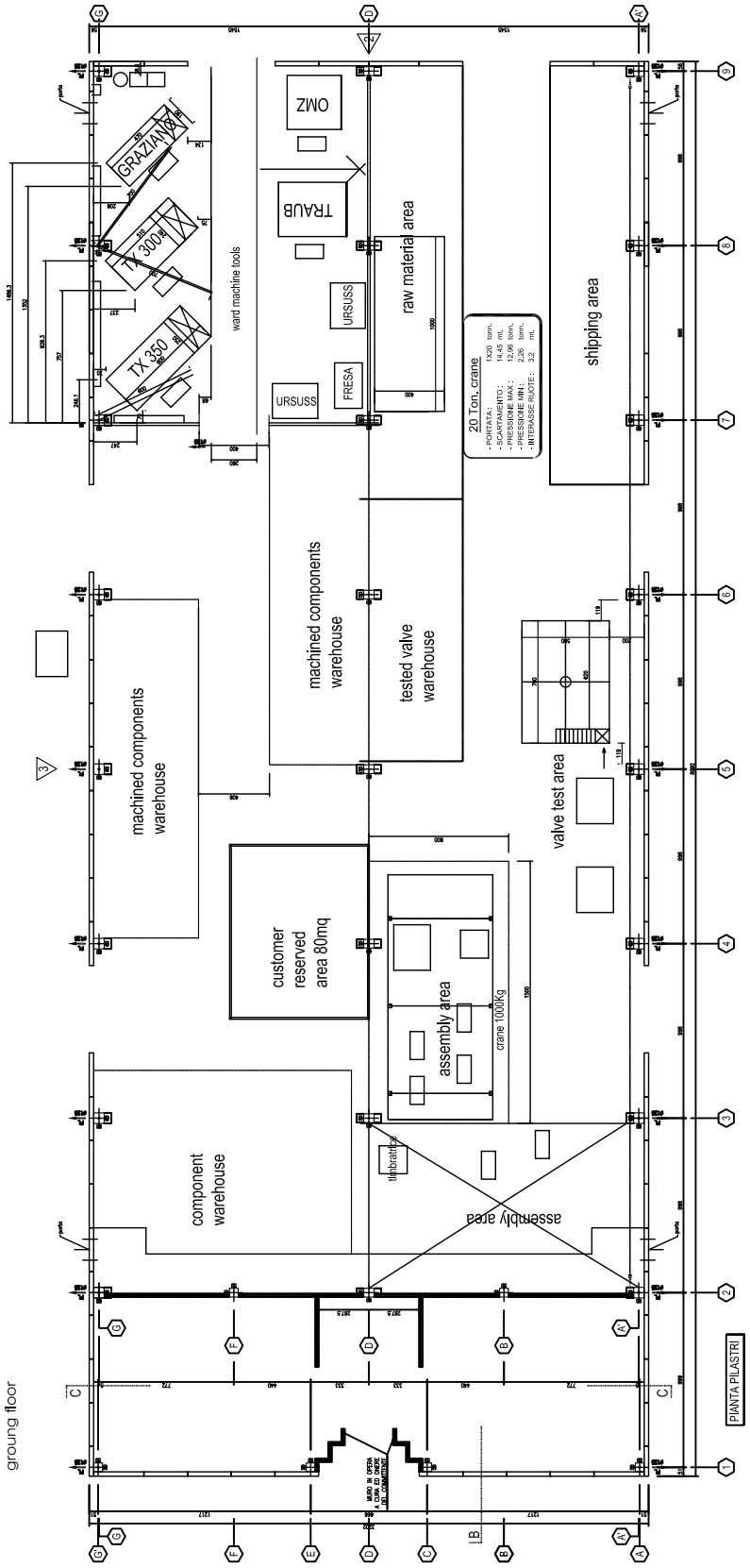


Updated at 16<sup>th</sup> November 2010



ground floor

first floor



3					
2					
1					
REV:		DESCRIPTION:	MODIFIED:	PASSED:	DATE:
DATE:	11-01-10	DRAFT:	PASSED:	SCALE:	1:1
VALVE TYPE:	SIZE:	CLASS:	TOLERANCE:	ROUGHNESS:	
			UNI EN 22768-mk	UNI ISO 1302-Ra3.2	
PART NAME:	SFEROVA PLANT LAY OUT		PLANT-01-2010-00		
MATERIAL:	WEIGHT:				
CUSTOMER:					
ORDER NO:	Sferova s.r.l. via delle Industrie 30/32 20050 Sulbiate (MB)-I Tel: 039-6079599 Fax: 039-6079582 E-mail: info@sferova.com Url: www.sferova.com				
SFEROVA REF:	<small>THIS DRAWING IS PROPERTY OF SFEROVA S.R.L. RIGHTS OF USE AND REPRODUCTION ARE RESERVED TO SFEROVA S.R.L. SFEROVA A TERMI DI LEGGE LA PROPRIETA' DEL PRESENTE DISEGNO</small>				





## RESOURCES EQUIPMENT AND FACILITIES

List of machinery / CNC machines as per below table:

Machine Name	Manufacture	Make	Model	Capacity	Quantity
Vertical automatic stock room	Stock	RFT	01/08	110 cells 56cm x 33cm x 28cm	1
CNC machining centre	Machining	OMZ	300	410mm	1
CNC machining centre	Machining	TRAUB	Gloria	400mm	1
CNC lathe machine	Machining	IMTS	TX 350	480mm	1
CNC lathe machine	Machining	IMTS	TX 300	320mm	1
CNC lathe machine	Machining	GRAZIANO	GT 500	250mm	1
Milling machine	Machining	ADCOCK-SHIPLEY BRIDGEPORT	A-52-2	250mm	1
Lathe	Machining	CMT	Ursus 250	500mm	1
Lathe	Machining	CMT	Ursus 225	450mm	1
Band saw	Machining	FERMI	783	85mm	1
Band saw	Machining	FORTE	SBA 341/S	360mm	1
Marking machine	Marking	AUTOMATOR	TMP6000	n/a	1
Marking machine	Marking	SIMET	PMS-V5-HP-HEAD	n/a	1
Materials analyzer	P.M.I.	NITON	XIt 898SW	Main ferrous and non-ferrous alloys	1
Helium leak detector + sniffer	Testing	ESA	Phoenix XL300	10÷50000sccm; 150psig; ≤10 <sup>-9</sup> scc/secHe; ≤10 <sup>-7</sup> scc/secHe	1
Pressure test bench	Testing	PASQUALI	20T	20T	1
Pressure test bench	Testing	ITALCONTROL	VTS-60	60T	1
Pressure test bench	Testing	ITALCONTROL	HTS-800	800T	1
Pressure test bench	Testing	ITALCONTROL	SVA-60-B-W350	50T	1
Cryogenic test bench	Testing	ITALCONTROL	HTS-140	140T	1
Booster	Testing	MAXIMATOR	DLE 30-75-2-GU	21750psi; 1:150	1
Semi-automatic packing machine	Packing	FILMA	FP ECO CP30	Europallet	1
Jib crane	Lifting	DEMAG - MANNESMAN		125Kg	1
Jib crane	Lifting	BRENNA		250Kg	1
Jib crane	Lifting	BRENNA		125Kg	1
Jib crane	Lifting	DEMAG		125Kg	1
Jib crane	Lifting	BONFANTI / DONATI		200Kg	1
Crane	Lifting	KONECRANES		1T	1
Double girder bridge crane	Lifting	BONFANTI / DONATI		20T	1
Forklift	Lifting	PRAMAC	GX 12/35 Plus	1,2T	1
Forklift	Lifting	CTC	Planet 425	2,5T	1



**SFEROVA s.r.l.**

Via delle industrie, 30/32  
20050 SULBIATE- MI - ITALY  
Tel. 039-6079599 Fax 039-6079582  
E-MAIL: [info@sferova.com](mailto:info@sferova.com)



6D-0290



## **BALL VALVES**

### **Main Subcontractors**

FLAME SPRAY SPA (Tungsten carbides or Chromium carbides coating)  
PRAXAIR SURFACE TECHNOLOGIES (Tungsten carbides or Chromium carbides coating)  
GASKET INTERNATIONAL SPA (balls & seats)  
GUARNIFLON SPA (seats)  
FLUORTEN SRL (seats)  
GUIN TECHNOLOGY SRL (seatings)  
JAMES WALKER ITALIANA SRL (o.rings)  
OLDRATI SPA (o.rings)  
SAINT-GOBAIN (lip seals)  
ACCIAIERIE VALBRUNA SPA (raw material)  
C.V.A. NICRORAM SRL (raw material)  
CHUN & VOLLERING SRL (raw material)  
IMS SPA (raw material)  
INOXFUCINE SPA (raw material)  
SANDVIK ITALIA SPA (raw material)  
TERNINOX SPA (raw material)  
TITALIA SRL (raw material)  
FORGIATURA MODERNA ARESE SPA (raw material)  
LOTERIOS SPA (raw material)  
FLOWERVE SPA (actuators)  
BIFFI ITALIA SRL (actuators)  
AUMA ITALIANA SRL (actuators)  
SOLDO SRL (automation)  
ROTORK ITALIA (actuators)  
ROTORK FLUIDSYSTEM (actuators)  
PRO CONTROL (actuators)  
O.M.E. METALLURGICA ERBESE SRL (bolting)  
PRESS BOLT SRL (bolting)  
BURAGO VITI SRL (bolting)  
BOLA-TEK MFG (balls)  
CUM SRL (gear operators)  
LENA ANTICORROSIONE SRL (painting)  
UBOLDI (painting)  
FAI OFFICINE DI CARVICO SPA (welding)  
I.M.B. INDUSTRIA MECCANICA BASIANO SRL (machining)  
NANA MECCANICA SNC (machining)  
QUALITY CONTROL SRL (NDE)  
SHAH PRECAST (castings)  
INOVATIVE TECHNOCAST / INOVA (castings)

[www.globalsupplyline.com.au](http://www.globalsupplyline.com.au)

*Global Supply Line Pty Ltd Australia  
Largest Sferova Stockist in the World  
Supplying Worldwide*

*(view our online stockists at our website)*



**SFEROVA s.r.l.**