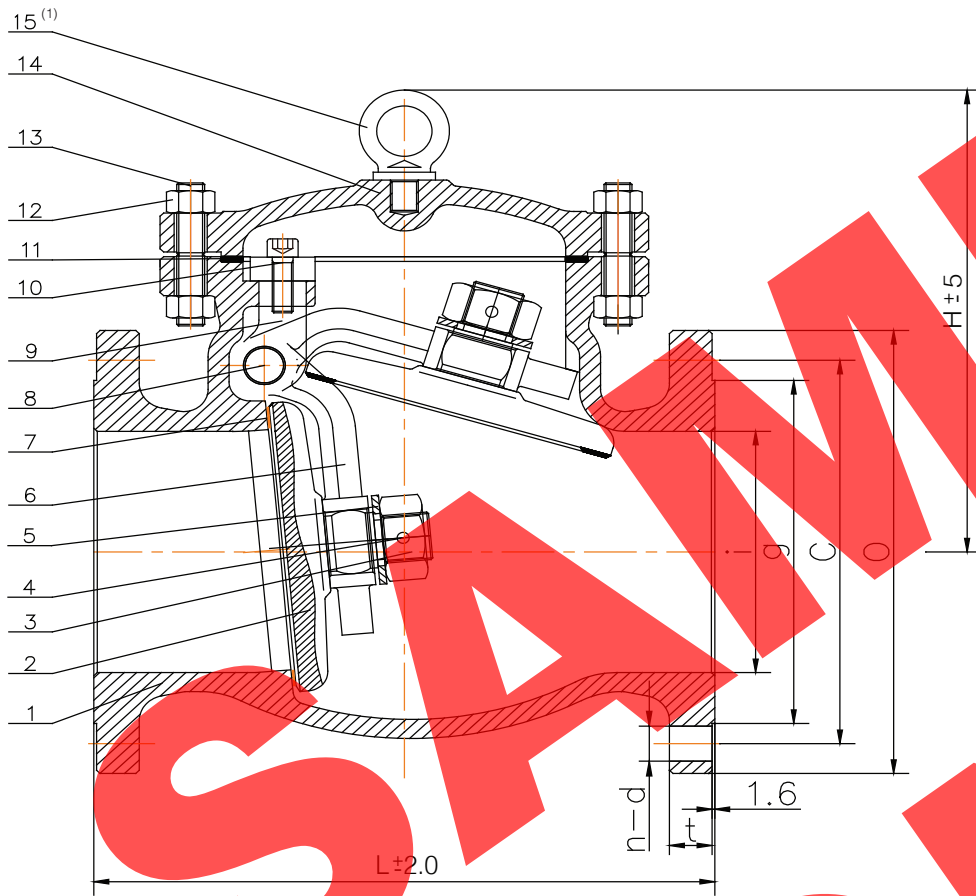




**AUSTRALIAN PIPELINE VALVE®**  
www.australianpipelinevalve.com.au



**BILL OF MATERIALS**

NO.	PART NAME	MATERIAL	NOTES
1	BODY	ASTM A351 CF8	PICKLED & PASSIVATED
2	DISC	ASTM A351 CF8	-
3	NUT	ASTM A194 8M	-
4	SPLIT PIN	ASTM A276 304	-
5	WASHER	ASTM A276 304	-
6	HINGE	ASTM A351 CF8	-
7	SEAT	INTEGRAL	-
8	SHAFT	ASTM A276 304	(2)
9	SUPPORT FORK	ASTM A351 CF8	-
10	BOLT	ASTM A193 B8	-
11	GASKET (ENCAPSULATED)	316+FLEX GRAPH+PTFE	SPIRAL WOUND+PTFE INNER
12	BOLT	ASTM A193 B8	-
13	NUT	ASTM A194 8	-
14	BONNET	ASTM A351 CF8	PICKLED & PASSIVATED
15	LIFTING EYELET	CARBON STEEL	(1) ZINC PLATED

(1) ≥ 100NB (4")  
(2) STEM SMOOTHNESS Ra ≤ 0.80 μm IN ACCORDANCE WITH API 594

**DIMENSIONS (MM) & WEIGHT (KG)**

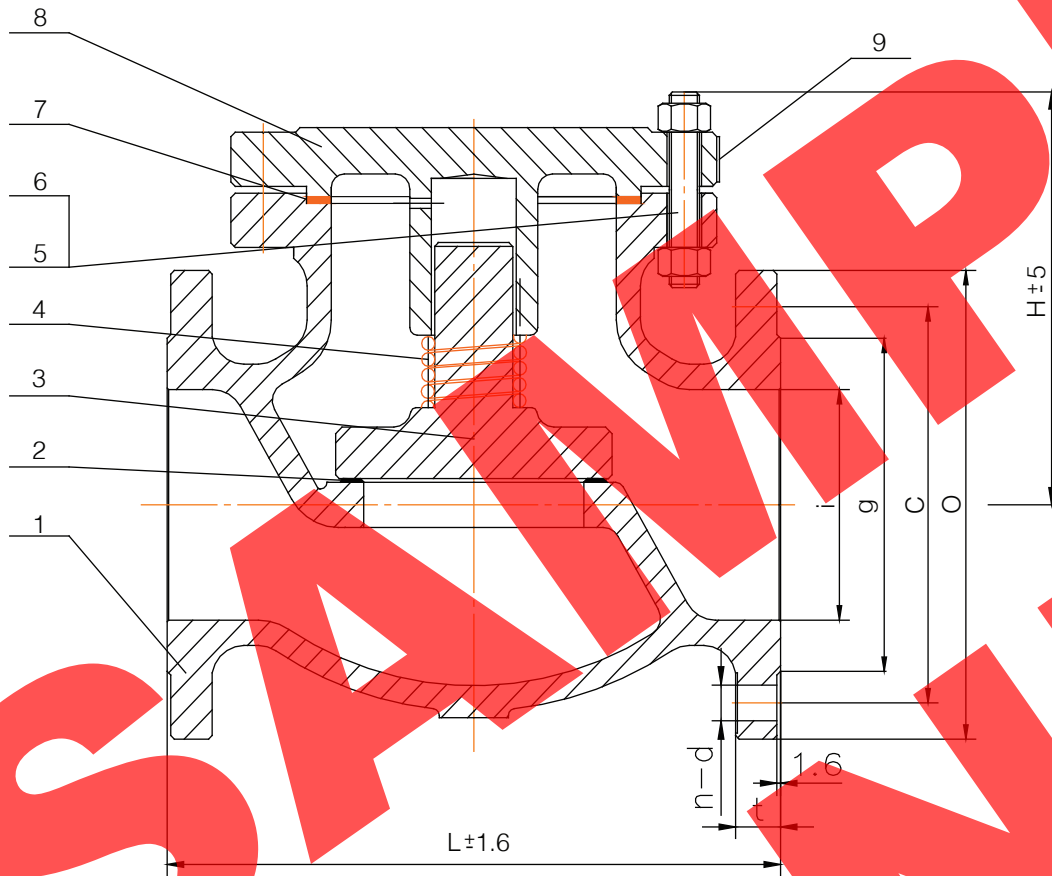
Inch	DN	L	i	O	C	g	n-d	t	H	Weight
2"	50	203	50.8	150.0	127.0	92	4-19	16	144	17
2 1/2"	65	216	63.5	180.0	139.7	105	4-19	15.9	150	23
3"	80	241	76.2	190.0	152.4	127	4-19	19	166	25
4"	100	292	101.6	230.0	190.5	157	8-19	24	223	40
5"	125	330	127.0	255.0	216.9	186	8-22	24	270	68
6"	150	356	152.4	280.0	241.3	216	8-22	26	265	85
8"	200	495	203.0	345.0	298.5	270	8-22	29	325	137
10"	250	622	254.0	405.0	362.0	324	12-25	31	385	207

RATING	CL 150	TEST PRESSURE	
DESIGN & MFG.	ASME B16.34 & BS1868	SHELL HYDRO	SEAT HYDRO
PRESS-TEMP RATING	ASME B16.34	2.9 Mpa   425 Psi	2.2 Mpa   325 Psi
FACE TO FACE DIM.	ASME B16.10	SEAT AIR	BACKSEAT
END CONNECTION	RFSF 3.2-6.3Ra	Mpa   Psi	Mpa   Psi
END DIMENSION	ASME B16.5	TEMPERATURE	
TEST & INSPECTION	API 598/ISO 5208	ASME B16.34 TC	ASME B16.34 TR
MARKING	MSS SP-25	MEDIUM	Water, Oil, Gas
OTHER REQ.	PICKLED & PASSIVATED BODY		
PORT SIZE	FULL PORT		
TRIM	API #10		
NOTES	NACE MR-01-75 & MR-01-03 (ISO 15156)		
OTHER	INVESTMENT CAST		

Check Valve, Swing, Model 50~250AP147LD8, NPS 2"~10" (DN50~DN250) Class 150, RF, BB	ORDER No/ DWG No	XXXXXX-99	APPROVED	B.T.
	REV.	00	CHECKED	S.Q.
<b>Australian Pipeline Valve</b>			<b>DRAWN</b>	C.C.



**AUSTRALIAN PIPELINE VALVE®**  
www.australianpipelinevalve.com.au



**BILL OF MATERIALS**

NO.	PART NAME	MATERIAL	NOTES
1	BODY	ASTM A351 CF8M	PICKLED & PASSIVATED
2	SEAT	ASTM A351 CF8M	-
3	DISC	ASTM A351 CF8M	-
4	SPRING	SS316	-
5	BOLT	ASTM A194 B8M	-
6	NUT	ASTM A194 B8	-
7	GASKET	SS316+PTFE	SPIRAL WOUND
8	BONNET	ASTM A351 CF8M	PICKLED & PASSIVATED
9	NAME PLATE	SS304	-

<b>RATING</b>	CL 150	<b>TEST PRESSURE</b>	
<b>DESIGN &amp; MFG.</b>	API600 / BS1873	<b>SHELL HYDRO</b>	<b>SEAT HYDRO</b>
<b>PRESS-TEMP RATING</b>	ASME B16.34	2.9 Mpa / 425 Psi	2.2 Mpa / 325 Psi
<b>FACE TO FACE DIM.</b>	ASME B16.10	<b>SEAT AIR</b>	<b>BACKSEAT</b>
<b>END CONNECTION</b>	RFSF 3.2-6.3Ra	- Mpa / - Psi	- Mpa / - Psi
<b>END DIMENSION</b>	ASME B16.5	<b>TEMPERATURE</b>	
<b>TEST &amp; INSPECTION</b>	API 598/ISO 5208	ASME B16.34 <sub>TC</sub>	ASME B16.34 <sub>TF</sub>
<b>MARKING</b>	MSS SP-25	<b>MEDIUM</b>	W.O.G/Chemical
<b>OTHER REQ.</b>	PICKLED & PASSIVATED BODY		
<b>PORT SIZE</b>	FULL PORT		
<b>TRIM</b>	API #10		
<b>NOTES</b>	NACE MR-01-75 & MR-01-03 (ISO 15156)		
<b>OTHER</b>	INVESTMENT CAST		

**DIMENSIONS (MM) & WEIGHT (KG)**

Inch	DN	L	i	O	C	g	n-d	t	H	Weight
1 1/2"	40	165	38.0	127.0	98.5	73	4-16	15	128	10

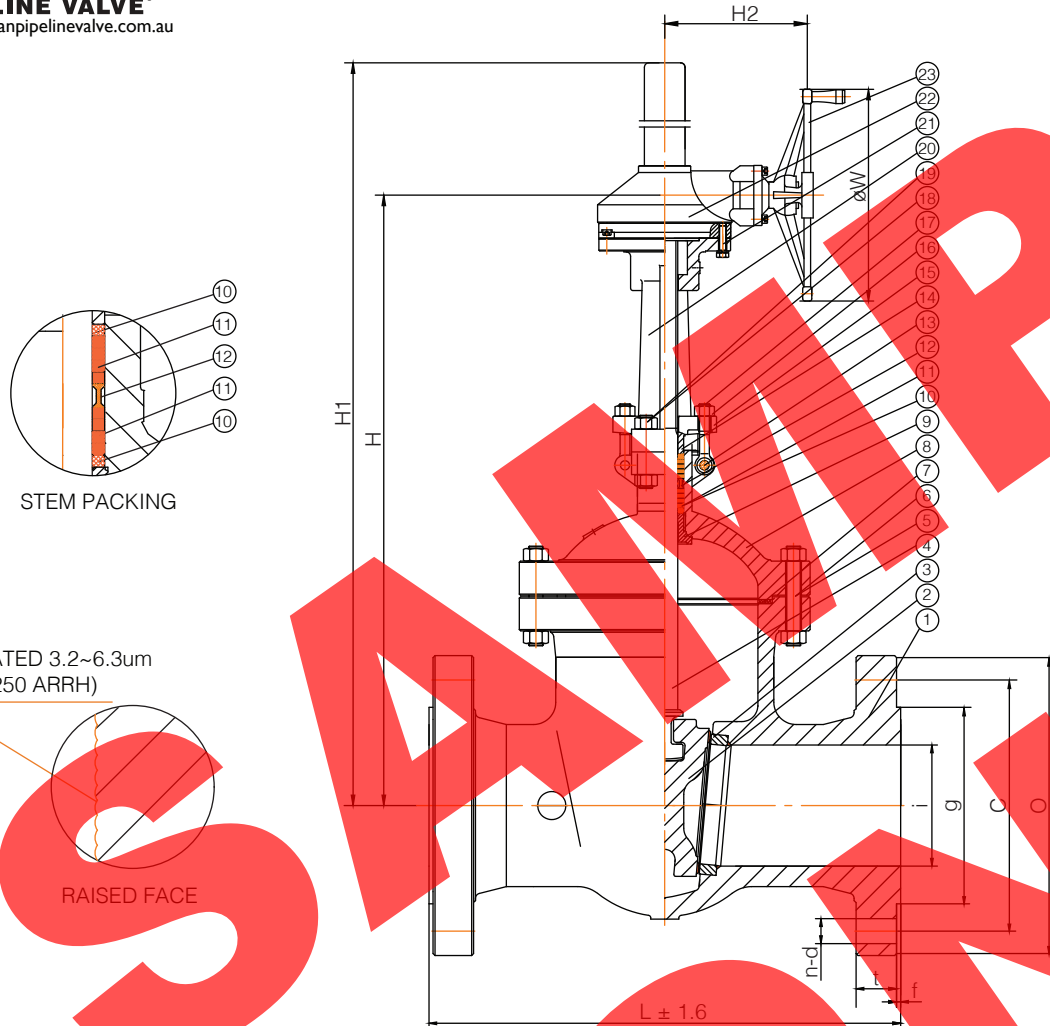
Check Valve, Piston Model SLCLLN-8M-A NPS 1 1/2" (DN40) Class 150 RF, BB	<b>ORDER N°/ DWG N°</b>	XXXXXX-99	<b>APPROVED</b>	B.T.
	<b>REV.</b>	00	<b>CHECKED</b>	S.Q.
<b>Australian Pipeline Valve</b>			<b>DRAWN</b>	C.C.



**AUSTRALIAN PIPELINE VALVE®**  
www.australianpipelinevalve.com.au



API 622 & ISO 15848-1  
Endurance Test Certified



**BILL OF MATERIALS**

NO.	PART NAME	MATERIAL	NOTES
1	BODY	ASTM A216 WCC	(1)
2	DISC	ASTM A216 WCC+ST#6	(1)
3	SEAT	ASTM A105+STL#6	-
4	STEM	ASTM A182 F6a	(3)
5	BOLT	ASTM A193 B7M	-
6	NUT	ASTM A194 2HM	-
7	GASKET (ENCAPSULATED)	SS316+GRAPHITE	SPIRAL WOUND
8	BONNET	ASTM A216 WCC	(1) (2)
9	BACK SEAT	ASTM A182 F6A+STL#6	-
10	PACKING	BRAIDED GRAPHITE	(2)
11	PACKING	FLEXIBLE GRAPHITE	(2)
12	SPACER RING	SS410	-
13	PIN	CARBON STEEL	-
14	GLAND	ASTM A276 410SS	-
15	YOKE FLANGE	ASTM A216 WCC	(1)
16	NUT	ASTM A194 2HM	-
17	BOLT	ASTM A193 B7M	-
18	BOLT	ASTM A193 B7M	-
19	NUT	ASTM A194 2HM	-
20	YOKE	ASTM A216 WCC	(1)
21	BOLT	ASTM A193 B7M	-
22	GEAR	CARBON STEEL	EA-1
23	HANDWHEEL	CARBON STEEL	-

(1) DUAL CERTIFIED A216 WCC  
(2) STUFFING BOX SMOOTHNESS  $\leq 3.2 \text{ Ra } \mu\text{m}$  (SUPERIOR TO API 600 REQUIREMENT)  
(3) STEM SMOOTHNESS  $\leq \text{Ra } 0.80 \mu\text{m}$  AS PER API 600

RATING	CL 400	TEST PRESSURE	
DESIGN & MFG.	API600 & ASME B16.34	SHELL HYDRO	SEAT HYDRO
PRESS-TEMP RATING	ASME B16.10	10.3 Mpa   1494 Psi	7.5 Mpa   1088 Psi
FACE TO FACE DIM.	ASME B16.10	SEAT AIR	BACKSEAT
END CONNECTION	RFSF Ra 3.2~6.3 $\mu\text{m}$	0.55 Mpa   80 Psi	11.4 Mpa   1650 Psi
END DIMENSION	ASME B16.5	TEMPERATURE	
TEST & INSPECTION	API 598/ISO 5208	-29 TO 425 $^{\circ}\text{C}$	-20 TO 800 $^{\circ}\text{F}$
MARKING & PAINT	MSS SP-25	MEDIUM	Steam
OTHER REQ.	NACE MR-01-75 & MR-01-03 (ISO 15156)		
PORT SIZE	12 3/8 ID		
TRIM	API #5		
NOTES	FLEXIBLE WEDGE		
SPECIAL	OPTIONAL API598 HP/LP SEAT TEST PERFORMED $\leq 35\%$ LOWER LEAKAGE		

**DIMENSIONS (MM) & WEIGHT (KG)**

Inch	DN	L	i	O	C	g	t	n-d	f	H	H1	H2	W	Weight
12"	300	765.05	314.32	521	450.8	324	57.4	16-35	6.4	1120	1400	450	520	600

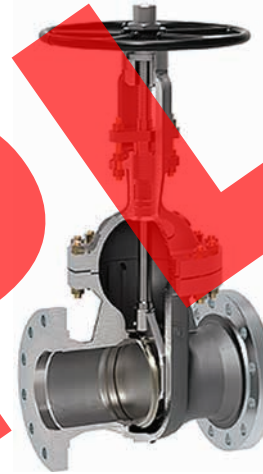
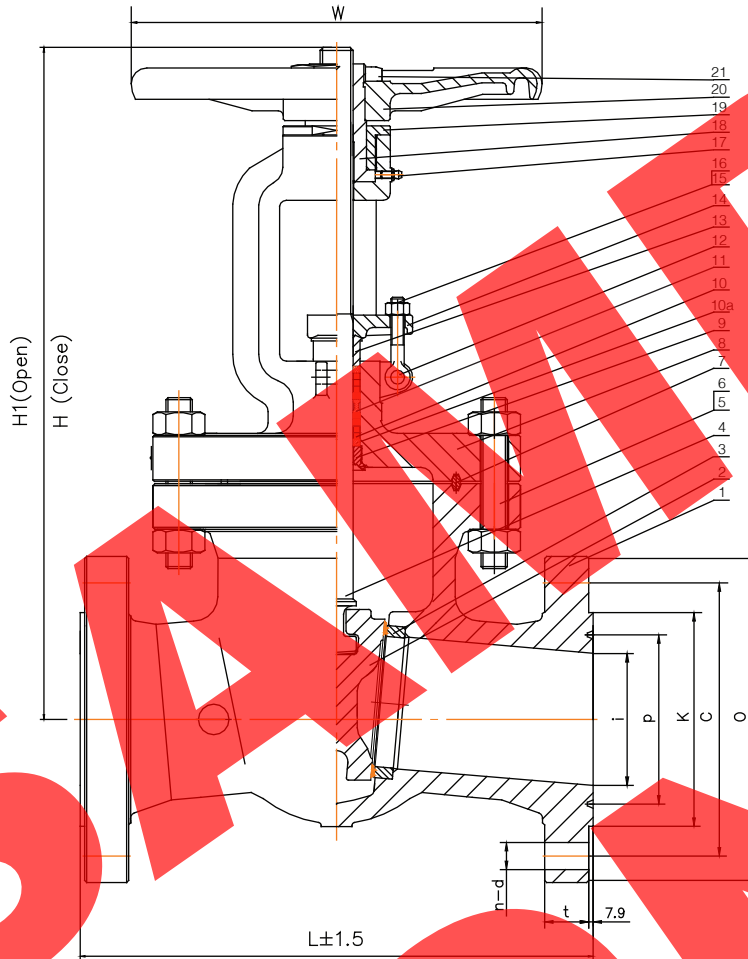
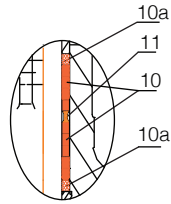
Dimensions in millimeters

Gate Valve, Model 300AP34LUFN-1G,  
NPS 12" (DN300) Class 400,  
RF, 12 3/8", BBOSY, GOP

ORDER N° / DWG N°	XXXXXX-99	APPROVED	B.T.
REV.	00	CHECKED	S.Q.
<b>Australian Pipeline Valve</b>		DRAWN	C.C.



**AUSTRALIAN PIPELINE VALVE®**  
www.australianpipelinevalve.com.au



**BILL OF MATERIALS**

NO.	PART NAME	MATERIAL	NOTES
1	BODY	ASTM A216 WCB	-
2	DISC	ASTM A216 WCB+ST#6	-
3	SEAT	ASTM A105+ST#6	-
4	STEM	ASTM A182 F6	(2)
5	BOLT	ASTM A193 B7M	-
6	NUT	ASTM A194 2HM	-
7	GASKET	SS316 RING	-
8	BONNET	ASTM A216 WCB	-
9	BACK SEAT	ASTM A276 410SS	-
10	PACKING	FLEXIBLE GRAPHITE	(1)
10a	PACKING	BRAIDED GRAPHITE	(1)
11	SPACER RING	ASTM A276 410SS	-
12	PIN	AISI 1020	-
13	GLAND	ASTM A276 410SS	-
14	YOKE FLANGE	ASTM A216 WCB	-
15	NUT	ASTM A194 2HM	-
16	BOLT	ASTM A193 B7M	-
17	GREASE NIPPLE	SS304	-
18	STEM NUT	ASTM A439 D2	-
19	GLAND NUT	AISI 1020	-
20	HANDWHEEL	MALLEABLE IRON	-
21	LOCKING NUT	AISI 1035	PHOSPHATED

(1) STUFFING BOX SMOOTHNESS Ra ≤ 3.2 μm (SUPERIOR TO API 600 REQUIREMENT)  
(2) STEM SMOOTHNESS ≤ Ra 0.80 μm AS PER API 600

<b>RATING</b>	CL 2500	<b>TEST PRESSURE</b>	
<b>DESIGN &amp; MFG.</b>	API 600 & ASME B16.34	<b>SHELL HYDRO</b>	<b>SEAT HYDRO</b>
<b>PRESS-TEMP RATING</b>	ASME B1634	63.9 Mpa   9275 Psi	46.9 Mpa   6800 Psi
<b>FACE TO FACE DIM.</b>	ASME B16.10	<b>SEAT AIR</b>	<b>BACKSEAT</b>
<b>END CONNECTION</b>	RFSF Ra 3.2-6.3 μm	0.55 Mpa   80 Psi	46.9 Mpa   6800 Psi
<b>END DIMENSION</b>	ASME B16.5	<b>TEMPERATURE</b>	
<b>TEST &amp; INSPECTION</b>	API 598/ISO 5208	-29 TO 425 °C	-20 TO 800 °F
<b>MARKING &amp; PAINT</b>	MSS SP-25	<b>MEDIUM</b>	Water, Oil, Gas
<b>OTHER REQ.</b>	NACE MR-01-75		
<b>PORT SIZE</b>	FULL		
<b>TRIM</b>	API #5		
<b>NOTES</b>	FLEXIBLE WEDGE		
<b>SPECIAL</b>	OPTIONAL API598 HP SEAT TEST PERFORMED ≤ 35% LOWER LEAKAGE		

**DIMENSIONS (MM) & WEIGHT (KG)**

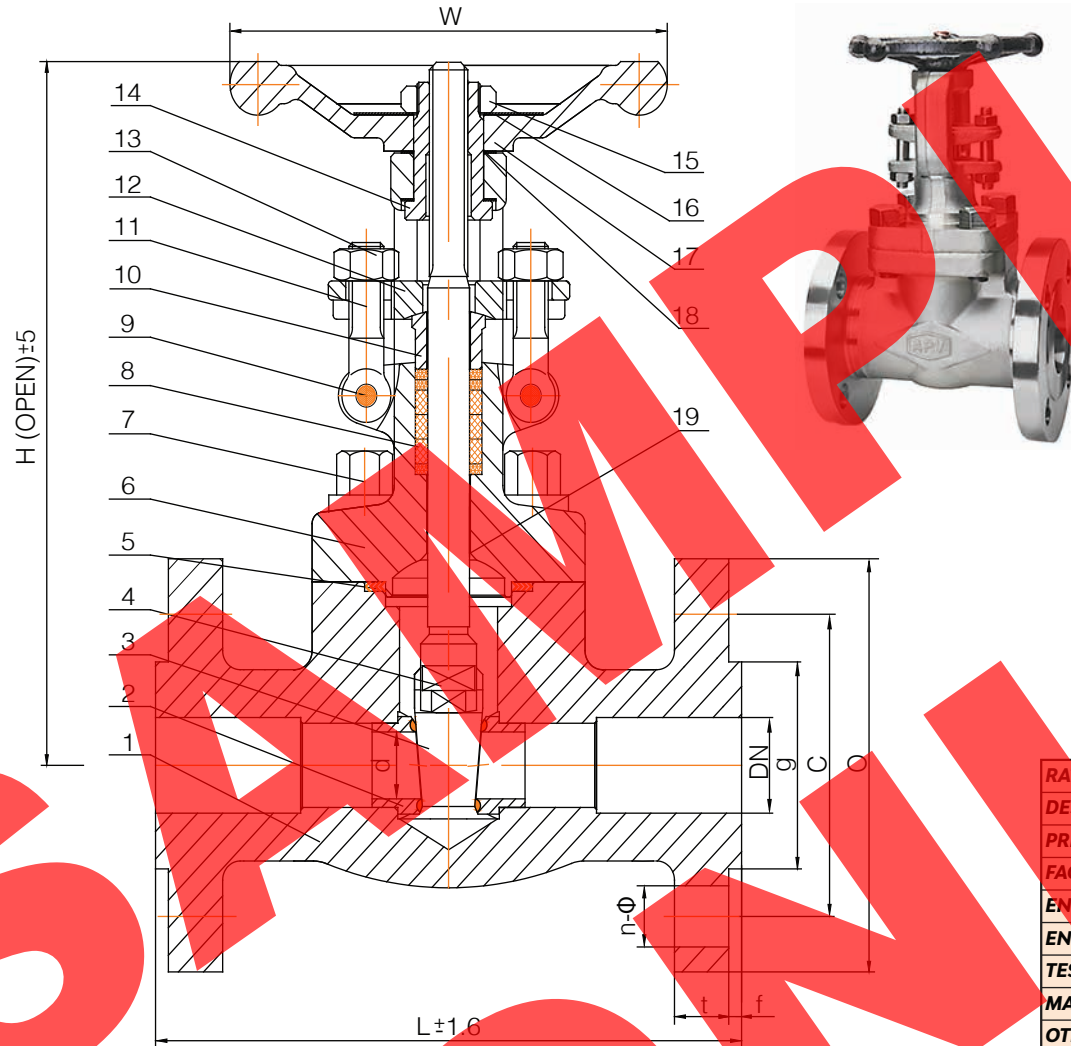
Inch	DN	L	i	O	C	K	t	n-d	P	H	H1	W	Weight
2"	50	454	38	235	171.4	133	51.0	8-29	101.6	550	593	350	110

Dimensions in millimeters

Gate Valve, Model 50AP25UFN-RJE, NPS 2" (DN50) Class 2500, RTJ, FB, BBOSY, HW	<b>ORDER N° / DWG N°</b>	XXXXXX-99	<b>APPROVED</b>	B.T.
	<b>REV.</b>	00	<b>CHECKED</b>	S.Q.
<b>Australian Pipeline Valve</b>			<b>DRAWN</b>	C.C.



**AUSTRALIAN PIPELINE VALVE®**  
www.australianpipelinevalve.com.au



**BILL OF MATERIALS**

NO.	PART NAME	MATERIAL	NOTES
1	BODY	ASTM A182 F316/L	(1)
2	SEAT	ASTM A276 316/L+ST#6	(1)
3	DISC	ASTM A276 316/L	(1)
4	STEM	ASTM A182 F316/L	(1) Ra <sub>s</sub> ≤ 0.8 μm
5	GASKET	SS316+PTFE	SPIRAL WOUND
6	BONNET	ASTM A182 F316/L	(1)
7	BOLT	ASTM A193 B8M	-
8	PACKING	FLEXIBLE GRAPHITE	(2)
9	PIN	ASTM A276 316	-
10	GLAND	ASTM A276 316	-
11	GLAND EYEBOLT	ASTM A193 B8M	-
12	GLAND FLANGE	ASTM A276 316	-
13	NUT	ASTM A194 8M	-
14	YOKE NUT	ASTM A276 410	-
15	NUT	AISI 1035	ZINC PLATED
16	NAME PLATE	SS316	-
17	HAND WHEEL	ASTM A197	ZINC PLATED
18	WASHER	SS316	-
19	BACK SEAT	INTEGRAL	CONICAL

(1) DUAL CERTIFIED 316/316L  
(2) PACKING CHAMBER BORE Ra<sub>s</sub> ≤ 3.2 μm

RATING	CL 300	TEST PRESSURE	
DESIGN & MFG.	API602 / ISO 15761/ASME B16.34	SHELL HYDRO	SEAT HYDRO
PRESS-TEMP RATING	ASME B16.34	7.6 Mpa 1100 Psi	5.5 Mpa 800 Psi
FACE TO FACE DIM.	ASME B16.10	SEAT AIR	BACKSEAT
END CONNECTION	RFSF 3.2-6.3 Ra	0.55 Mpa 80 Psi	5.5 Mpa 800 Psi
END DIMENSION	ASME B16.5	TEMPERATURE	
TEST & INSPECTION	API 598	ASME B16.34 <sub>TC</sub> ASME B16.34 <sub>TF</sub>	
MARKING & PAINT	MSS SP-25 PICKLED & PASSIVATED	MEDIUM	Water, Oil, Gas
OTHER REQ.	INTEGRAL FLANGED		
PORT SIZE	REGULAR STANDARD PORT		
TRIM	API #12		
NOTES	OPTIONAL HP SEAT TEST PERFORMED TO API 598		
OTHER	NACE MR-01-75/ MR-01-03		

**DIMENSIONS (MM) & WEIGHT (KG)**

Inch	DN	L	d	O	C	g	n-ø	t	f	H	W	Weight
1/2"	15	140	10.5	95	66.5	35	4-15	15	1.6	161	100	3.8
3/4"	20	152	13.5	117	82.0	43	4-19	16	1.6	163	100	4.9
1"	25	165	17.0	124	89.0	51	4-19	18	1.6	196	125	7.2
1 1/2"	40	190	29.0	156	114.0	73	4-19	21	1.6	250	160	12.6
2"	50	216	36.5	165	127.0	92	8-19	23	1.6	290	180	18.0

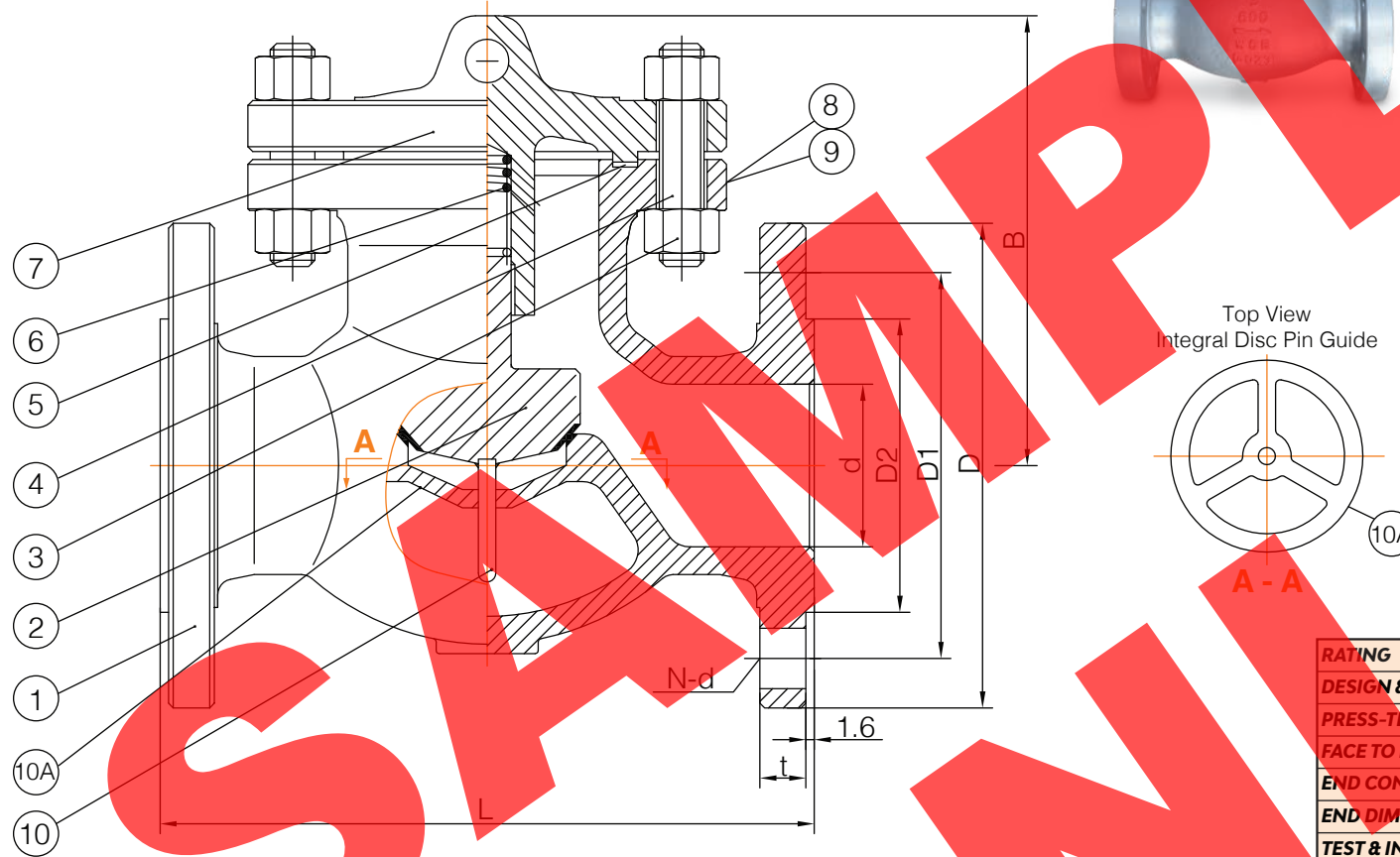
Dimensions in millimeters

Wedge Gate Valve, Bolted Bonnet,  NPS 1/2"~2" (DN15~DN50) Class 300 RF, HWOP, SB, A182 F316/L, Trim API #12	ORDER N°/ DWG N°	XXXXXX-99	APPROVED	B.T.
	REV.	00	CHECKED	S.Q.
<b>Australian Pipeline Valve</b>			<b>DRAWN</b>	C.C.





**AUSTRALIAN PIPELINE VALVE®**  
www.australianpipelinevalve.com.au



**BILL OF MATERIALS**

NO.	PART NAME	MATERIAL	NOTES
1	BODY (& SEAT)	ASTM A216 WCB+STL6	(1)
2	DISC	ASTM A105+13CR	INTEGRAL
3	NUT	ASTM A194 2H	-
4	BOLT	ASTM A193 B7	-
5	GASKET	SS316+FLEXIBLE GRAPHITE	ENCAPSULATED
6	SPRING	INCONEL X750	-
7	COVER & CAGE GUIDE	ASTM A216 WCB	INTEGRAL
8	RIVET	BRONZE	-
9	NAMEPLATE	SS316	-
10	GUIDE PIN	ASTM A182 410SS	-
10A	DISC PIN GUIDE	INTEGRAL	-

(1) INTEGRAL SEAT STELLITE #6 OVERLAY)

<b>RATING</b>	CL 300	<b>TEST PRESSURE</b>	
<b>DESIGN &amp; MFG.</b>	ASME API 6D & BS1873 (API 594 WALL)	<b>SHELL HYDRO</b>	<b>SEAT HYDRO</b>
<b>PRESS-TEMP RATING</b>	ASME B16.34	7.7 Mpa   1125 Psi	5.7 Mpa   825 Psi
<b>FACE TO FACE DIM.</b>	ASME B16.10	<b>SEAT AIR</b>	<b>BACKSEAT</b>
<b>END CONNECTION</b>	RFSF 3.2~6.3Ra	Mpa   Psi	Mpa   Psi
<b>END DIMENSION</b>	ASME B16.5	<b>TEMPERATURE</b>	
<b>TEST &amp; INSPECTION</b>	API 598/ ISO 5208	-29 TO 425 °C	-20 TO 797 °F
<b>MARKING &amp; PAINT</b>	MSS SP-25 PAINT FB-307-00	<b>MEDIUM</b>	Water, Oil, Steam
<b>OTHER REQ.</b>	WALL THICKNESS DUAL CONFORMS API 600 & API 594		
<b>PORT SIZE</b>	FULL PORT		
<b>TRIM</b>	API #8 NACE MR-01-75 & MR-01-03		
<b>NOTES</b>	CAGE & DISC GUIDED		
<b>OTHER</b>	INVESTMENT CAST		

**DIMENSIONS (MM) & WEIGHT (KG)**

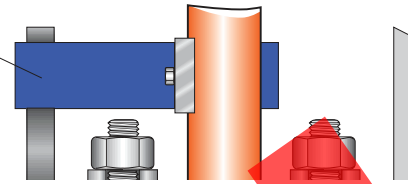
Inch	DN	d	L	B	D	D1	D2	t	N-d	Weight
2"	50	51	267	200	165	127.0	92.0	23	8-19	29
3"	80	80	318	250	210	168.3	127.0	30	8-22	48
4"	100	100	356	453	254	200.0	157.0	31	8-23	73
6"	150	152	444	526	318	270.0	216.0	37	12-23	120
8"	200	200	533	546	381	330.2	270.0	42	12-26	205

Dimensions in millimeters

Piston Check Valve Model 50~200AP301XUNQZ, V-Plug NPS 2"~8" (DN50~DN200) Class 300, Cage & Disc Guided	<b>ORDER N°/ DWG N°</b>	XXXXXX-99	<b>APPROVED</b>	B.T.
	<b>REV.</b>	00	<b>CHECKED</b>	S.Q.
<b>Australian Pipeline Valve</b>			<b>DRAWN</b>	C.C.

**Torque Arm**

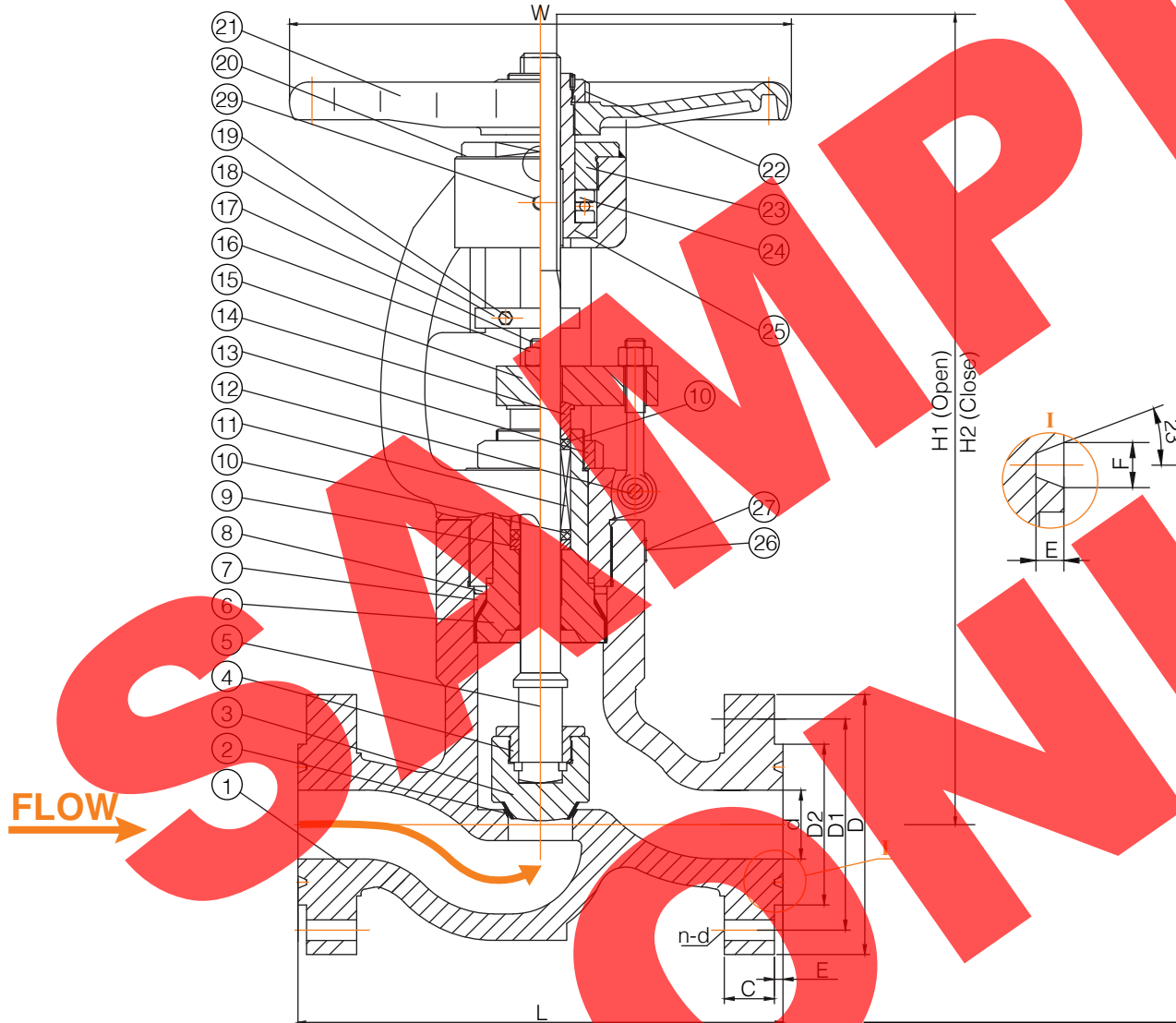
The torque arm prevents stem movement which reduces wear on packing rings and enables better sealing as well as reducing torque. Non rotating stem, only the stem nut rotates. The arm also provides visual stem position indication and can be interfaced with position switches.



**BILL OF MATERIALS**

NO.	PART NAME	MATERIAL	NOTES
1	BODY	ASTM A216 WCB	-
2	SEAT SURFACE	STELLITE#6	OVERLAY
3	DISC	ASTM A216 WCB+STL#6	-
4	DISC COVER	ASTM A276 410	-
5	STEM	ASTM A182 F6A	(1)
6	BONNET	ASTM A216 WCB	-
7	PRESSURE SEAL RING	316SS	-
8	THRUST SEAL RING	ASTM A276 410	-
9	RETAINER	ASTM A276 410	-
10	PACKING	BRAIDED GRAPHITE	(2) OUTER
11	PACKING	FLEXIBLE GRAPHITE	(2) 316 REINFORCED
12	PIN	AISI 1035	-
13	BREECHLOCK NUT	AISI 1040	-
14	GLAND	ASTM A276 410	-
15	GLAND FLANGE	ASTM A216 WCB	-
16	EYEBOLT	ASTM A193 B7M	-
17	NUT	ASTM A194 2HM	-
18	TORQUE ARM	AISI 1020	(3)
19	SCREW	CS+ZP	-
20	BONNET YOKE	ASTM A216 WCB	-
21	HANDWHEEL	MALLEABLE IRON	(3)
22	RETAINING NUT	AISI 1035	-
23	GLAND NUT	AISI 1035	-
24	THRUST BEARING	SUB-ASSEMBLY	(3)
25	STEM NUT	ALUMINIUM BRONZE	-
26	RIVET	316SS	-
27	NAMEPLATE	316SS	-
28	BACK SEAT	ASTM A276 316	OVERLAY

(1) STEM SMOOTHNESS Ra ≤ 0.80µm per API 623/API 600  
(2) STUFFING BOX SMOOTHNESS Ra ≤ 3.2µm (SUPERIOR TO API 623)  
(3) LARGE HANDWHEEL, STEM THRUST BEARINGS AND TORQUE ARM FOR EASE OF OPERATION, ASSURED SHUT OFF AND LONG LIFE



<b>RATING</b>	CL 2500	<b>TEST PRESSURE</b>	
<b>DESIGN &amp; MFG.</b>	ASME B16.34 & BS1873 (API 600 WALL)	<b>SHELL HYDRO</b>	<b>SEAT HYDRO</b>
<b>PRESS-TEMP RATING</b>	ASME B16.34	63.9 Mpa / 9267 Psi	46.9 Mpa / 6802 Psi
<b>FACE TO FACE DIM.</b>	ASME B16.10	<b>SEAT AIR</b>	<b>BACKSEAT</b>
<b>END CONNECTION</b>	RTJ	0.55 Mpa / 80 Psi	46.9 Mpa / 6802 Psi
<b>END DIMENSION</b>	ASME B16.5	<b>TEMPERATURE</b>	
<b>TEST &amp; INSPECTION</b>	API 598/ISO 5208	-29 TO 345 °C	-20 TO 653 °F
<b>MARKING &amp; PAINT</b>	MSS SP-25, PAINT PPWF07.002	<b>MEDIUM</b>	Water, Oil, Gas
<b>OTHER REQ.</b>	NACE MR-01-75 & MR-01-03 (ISO 15156)		
<b>PORT SIZE</b>	FULL S-BEND DESIGN		
<b>TRIM</b>	API #5		
<b>NOTES</b>	PLUG TYPE		
<b>OTHER</b>	OPTIONAL API 598 LP SEAT TEST ALSO PERFORMED		

**DIMENSIONS (MM) & WEIGHT (KG)**

Inch	DN	L	d	D	D1	D2	P	E	F	C	n-d	H1	H2	W	Weight
2"	50	454	38	235	171.4	133	101.6	7.92	11.91	50.9	8-29	722	705	400	135

Dimensions in millimeters

Globe Valve, Model 50AP125UAN-PRJ,  
NPS 2" (DN50) Class 2500, S-Bend  
Design, RTJ, FP, PSBOSY, HWOP

<b>ORDER N°/ DWG N°</b>	XXXXXX-99	<b>APPROVED</b>	B.T.
<b>REV.</b>	00	<b>CHECKED</b>	S.Q.
<b>Australian Pipeline Valve</b>		<b>DRAWN</b>	C.C.